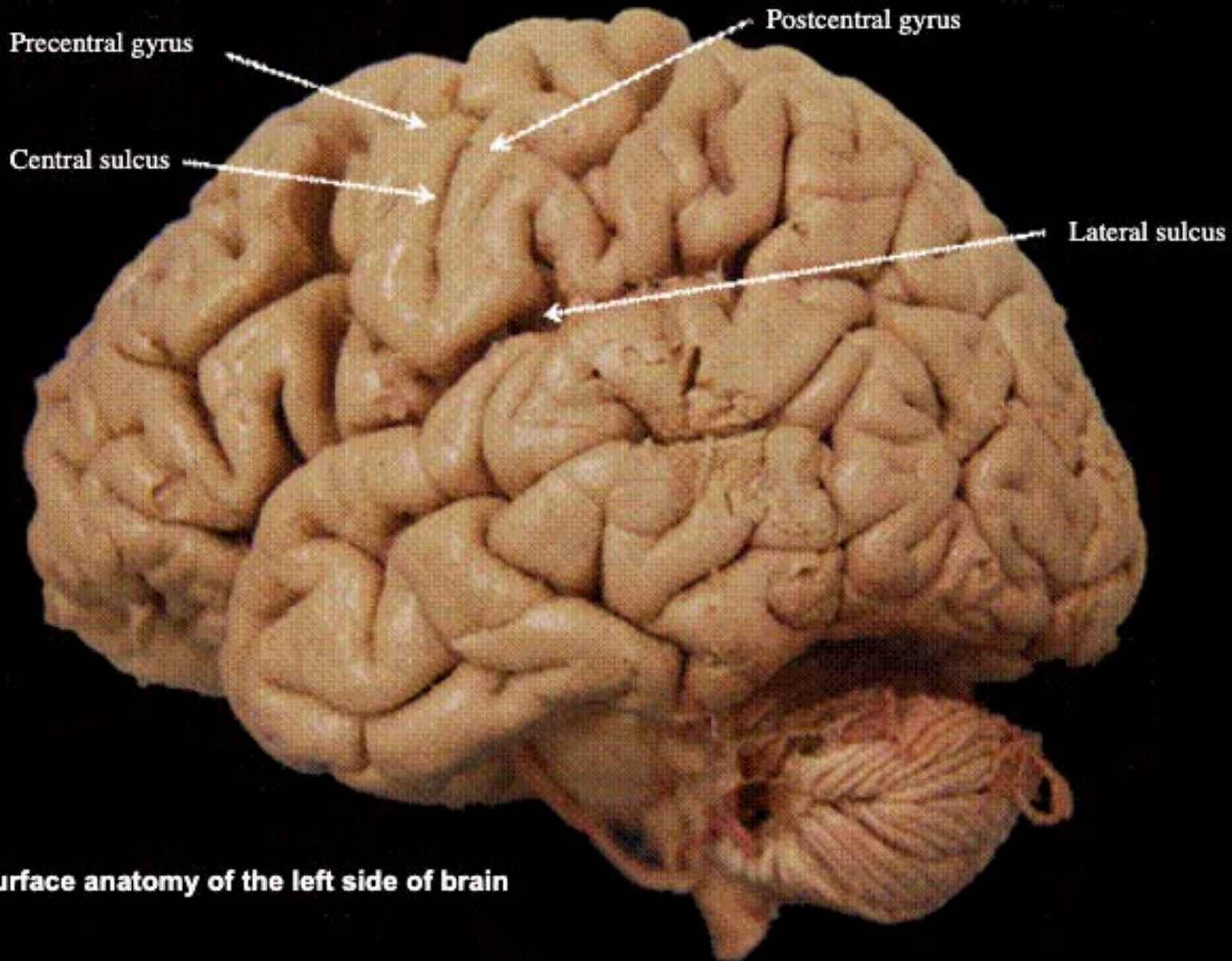
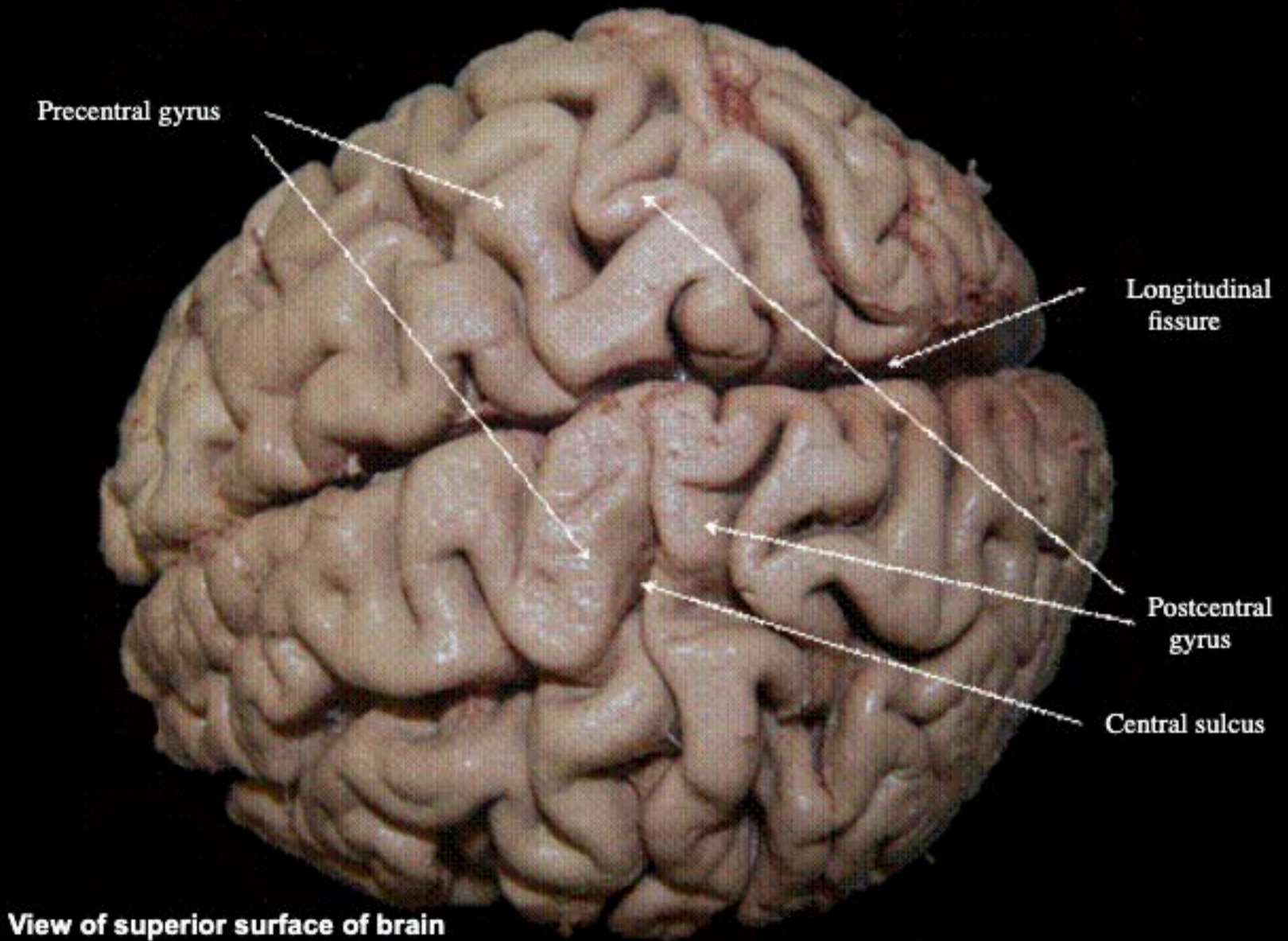


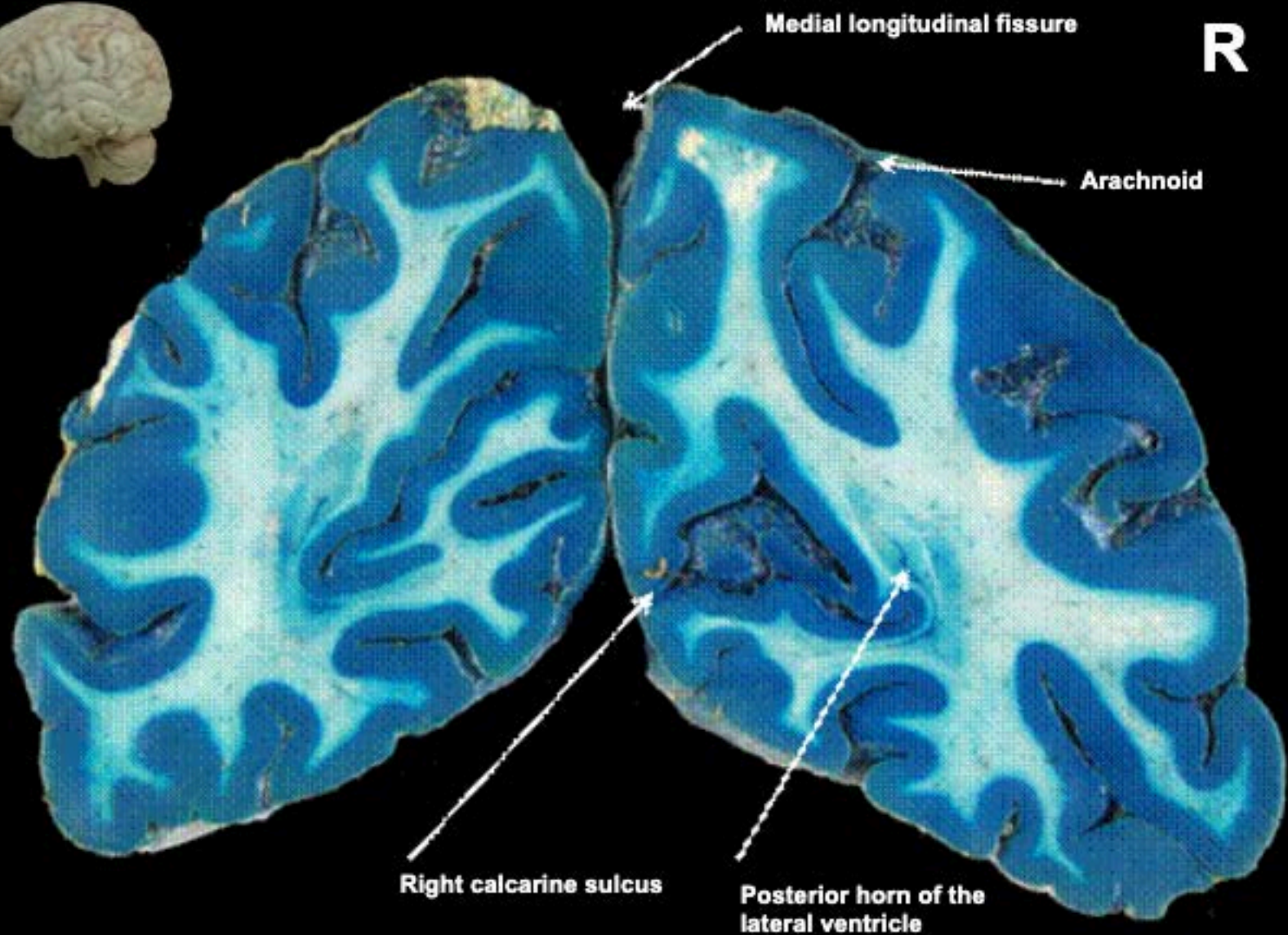
The following 2 slides show a left sagittal and a superior view of the human brain. The subsequent 37 figures are coronal sections cut through a human brain which had been fixed in 10% paraformaldehyde sectioned with a commercial meat slicer and then stained by the method of LeMasurier, H.E., Arch. Neurol. Psychiat., 34: 1065, 1935. The sections begin at the caudal end of the brain and the posterior and anterior surface of each section is presented in order. Orientation is provided by the letter R which indicates the upper right corner of the brain section. The approximate location of the cut through the brain is shown on the small sagittal view of the brain shown on the posterior views only. Labeling of structures is based primarily on the atlas "The Human Brain in Dissection", 2nd Edition by D.G. Montemurro and J.E. Bruni, Oxford University Press, 1988. Structures once identified may not always be labeled on subsequent sections.

**William W. Morgan, Ph.D.
Department of Cellular and Structural Biology
The University of Texas Health Science Center
San Antonio, Texas 78229-3900**



Surface anatomy of the left side of brain





Medial longitudinal fissure

R

Arachnoid

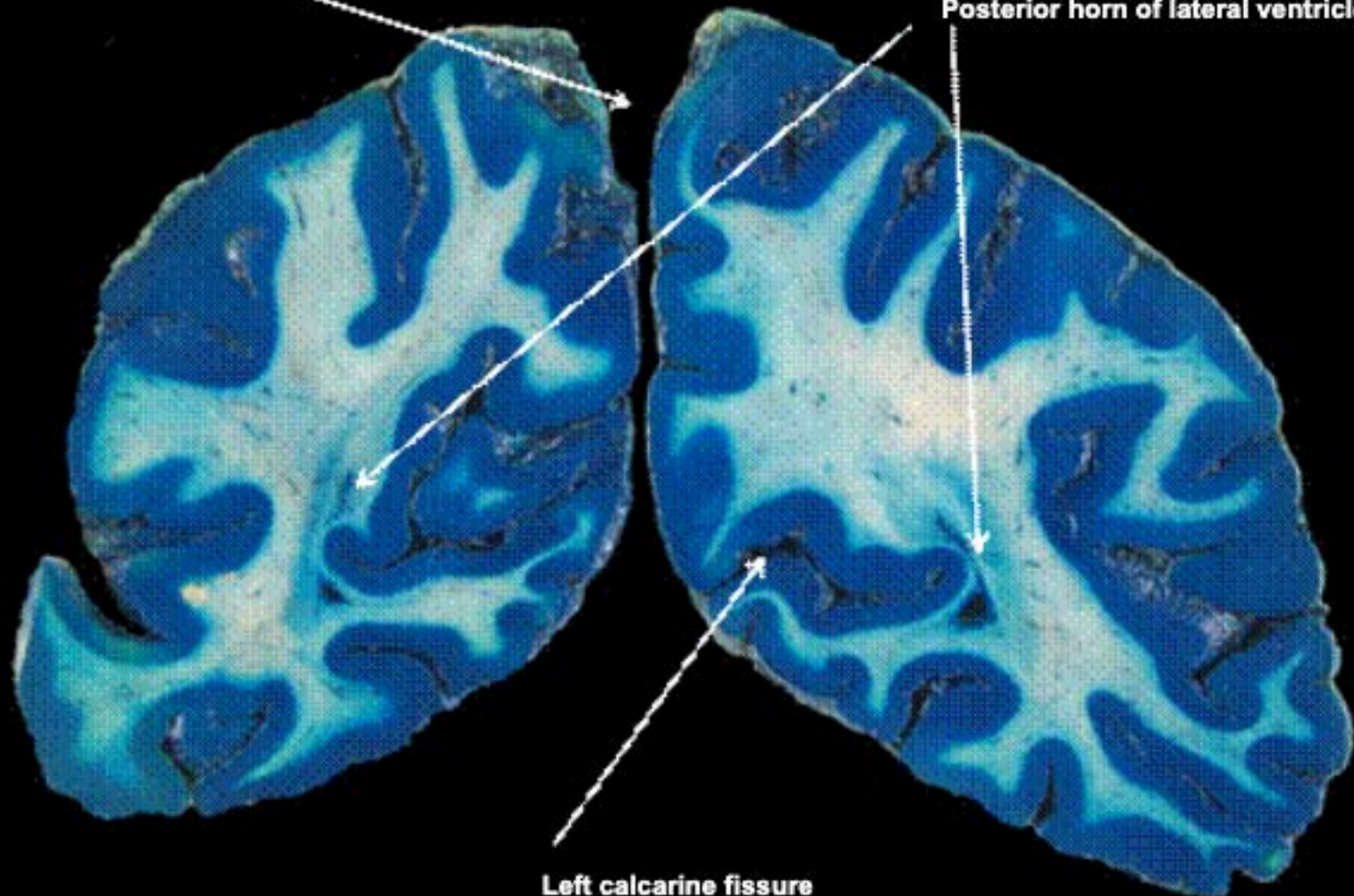
Right calcarine sulcus

Posterior horn of the lateral ventricle

R

Medial longitudinal fissure

Posterior horn of lateral ventricle



Left calcarine fissure



R

Calcarine fissure

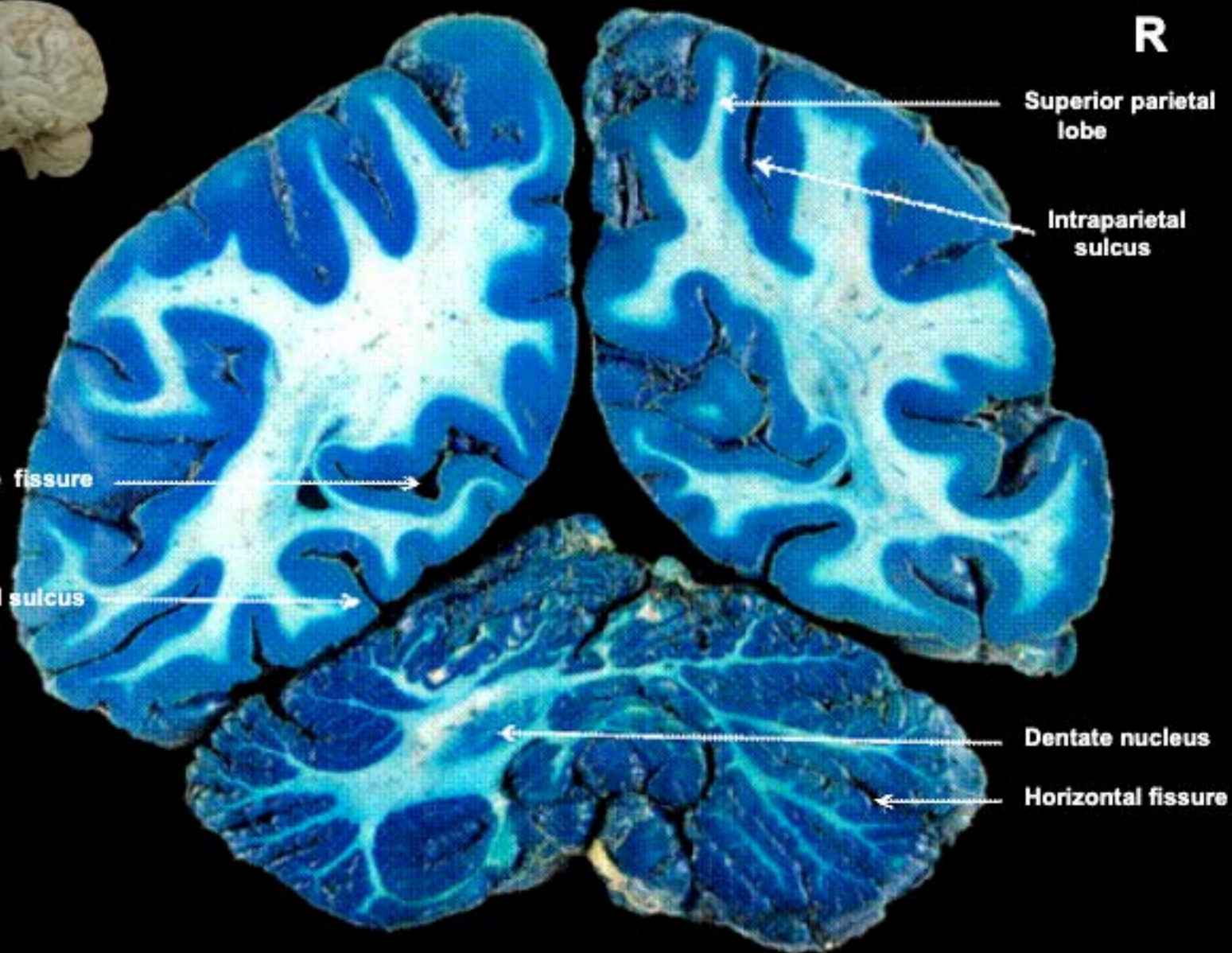
Collateral sulcus

Superior parietal lobe

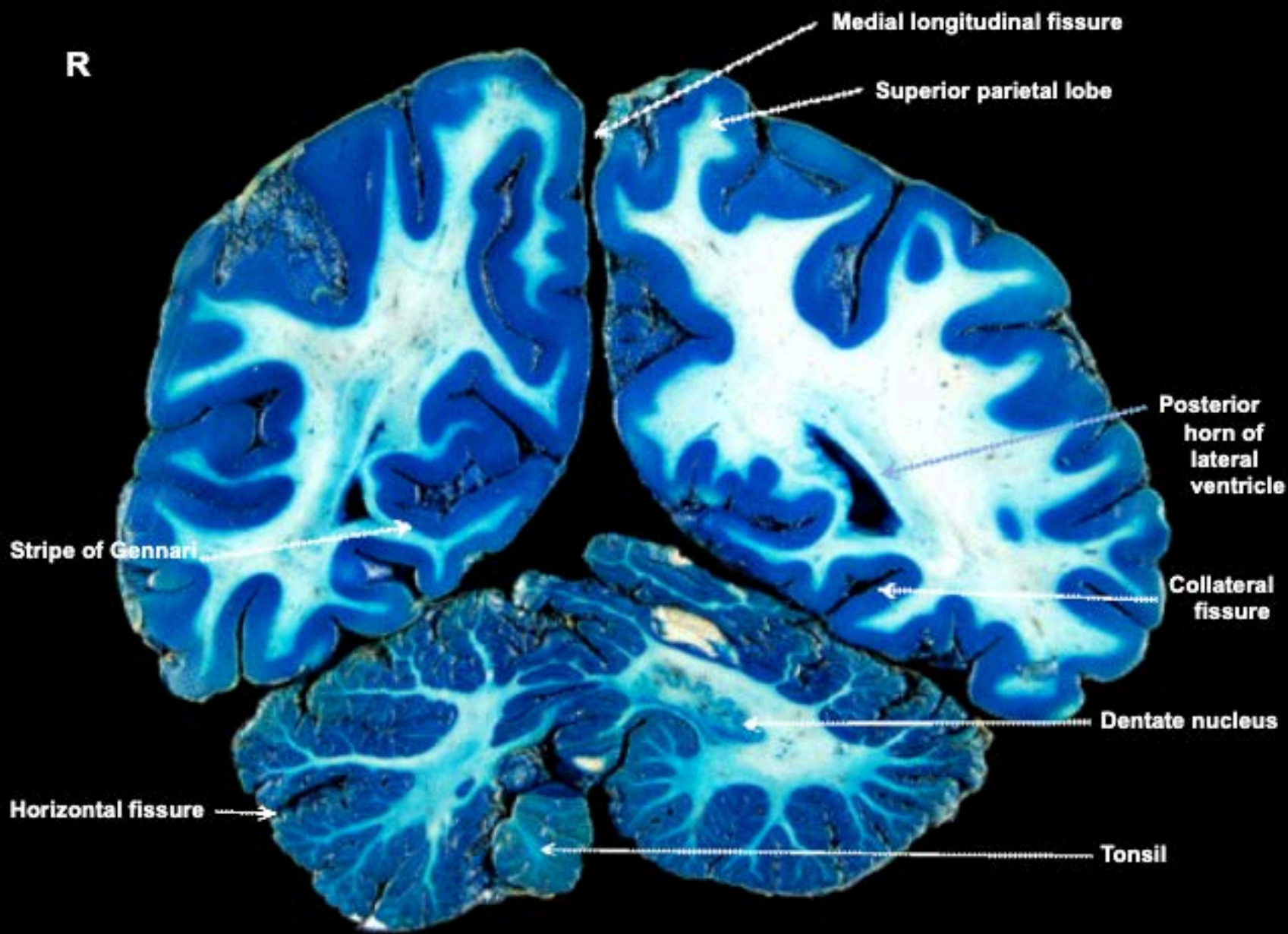
Intraparietal sulcus

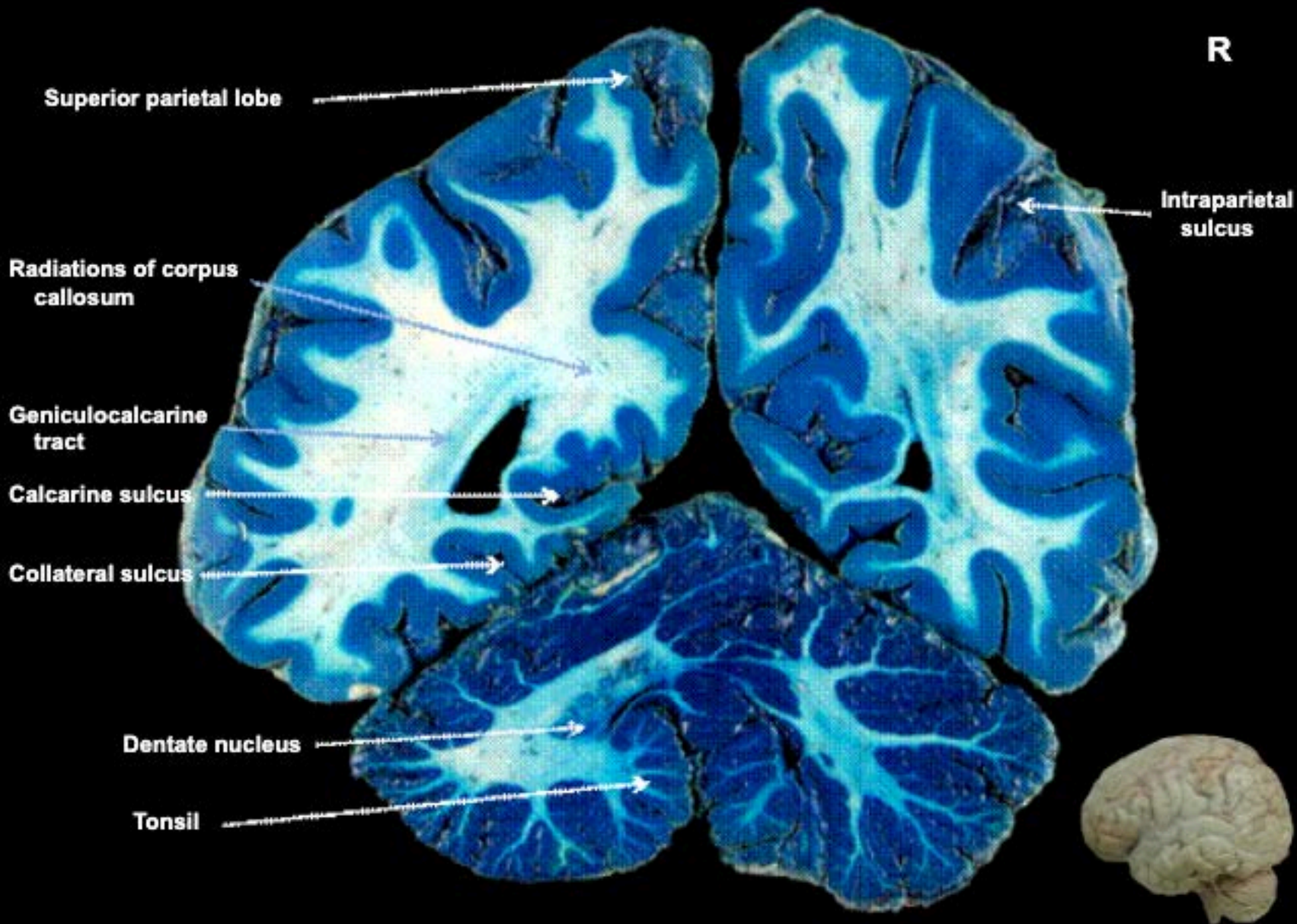
Dentate nucleus

Horizontal fissure



R





R

Intraparietal sulcus

Inferior parietal lobe

Calcarine fissure

Lingual gyrus

Fastigial, globose emboliform nuclei

Dentate nucleus

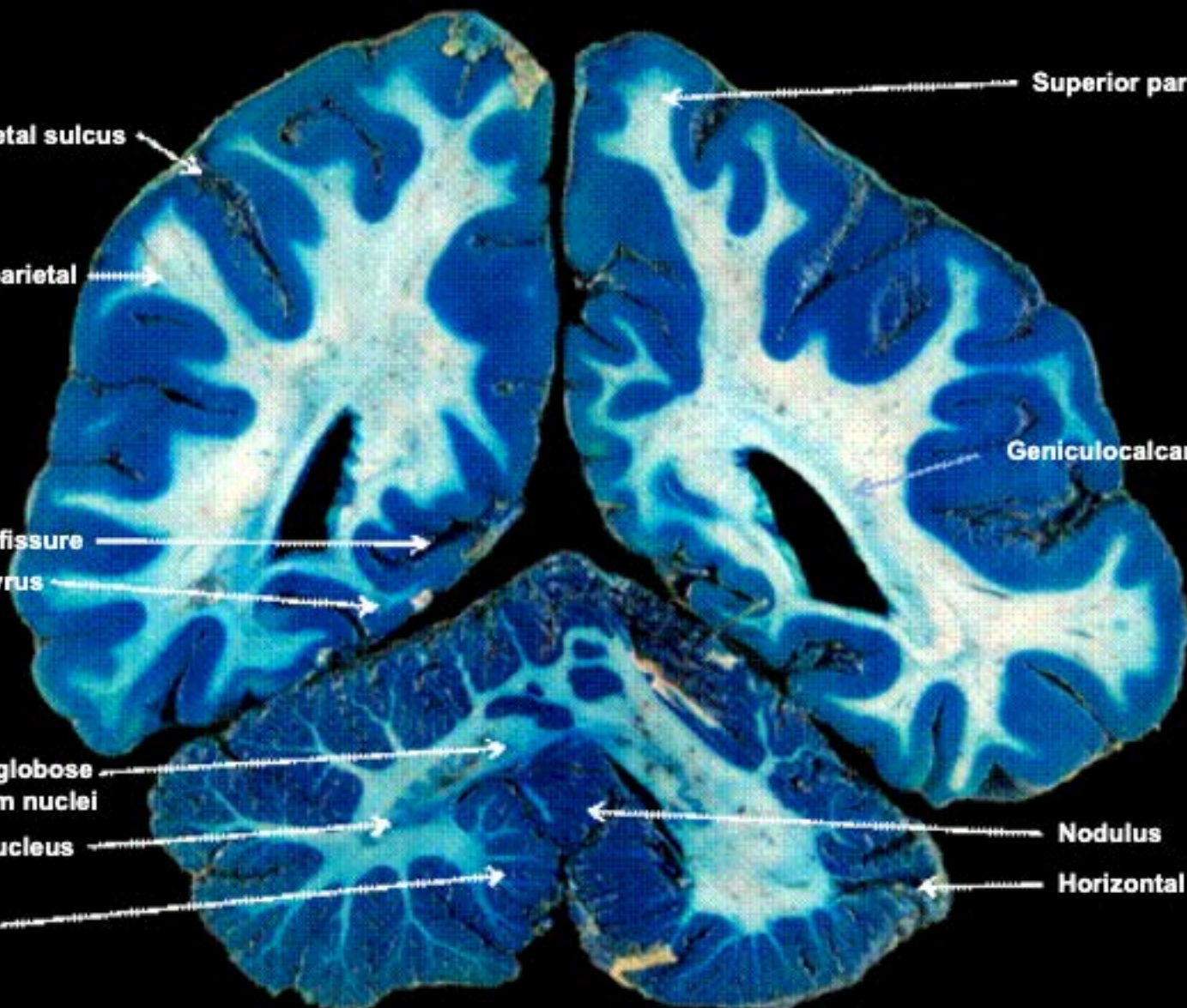
Tonsil

Superior parietal lobe

Geniculocalcarine tract

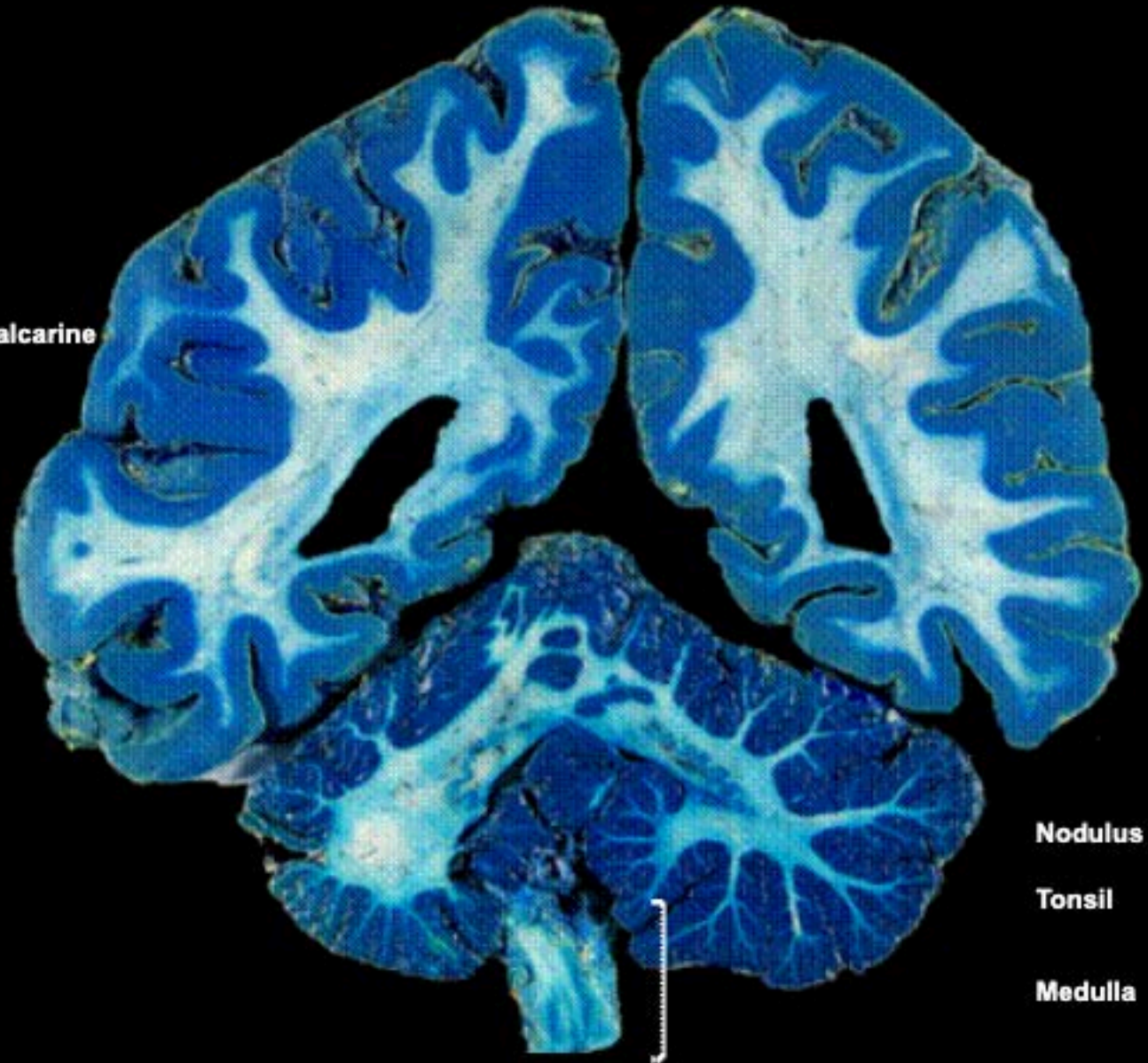
Nodulus

Horizontal fissure



R

Geniculocalcarine tract



Calcarine sulcus

Lingual gyrus

Collateral sulcus

Occipito-temporal sulcus

Nodulus

Tonsil

Medulla

Corpus
callosum

R

Geniculocarcarine
tract

Hippocampus

Dentate nucleus

Cingulate
sulcus

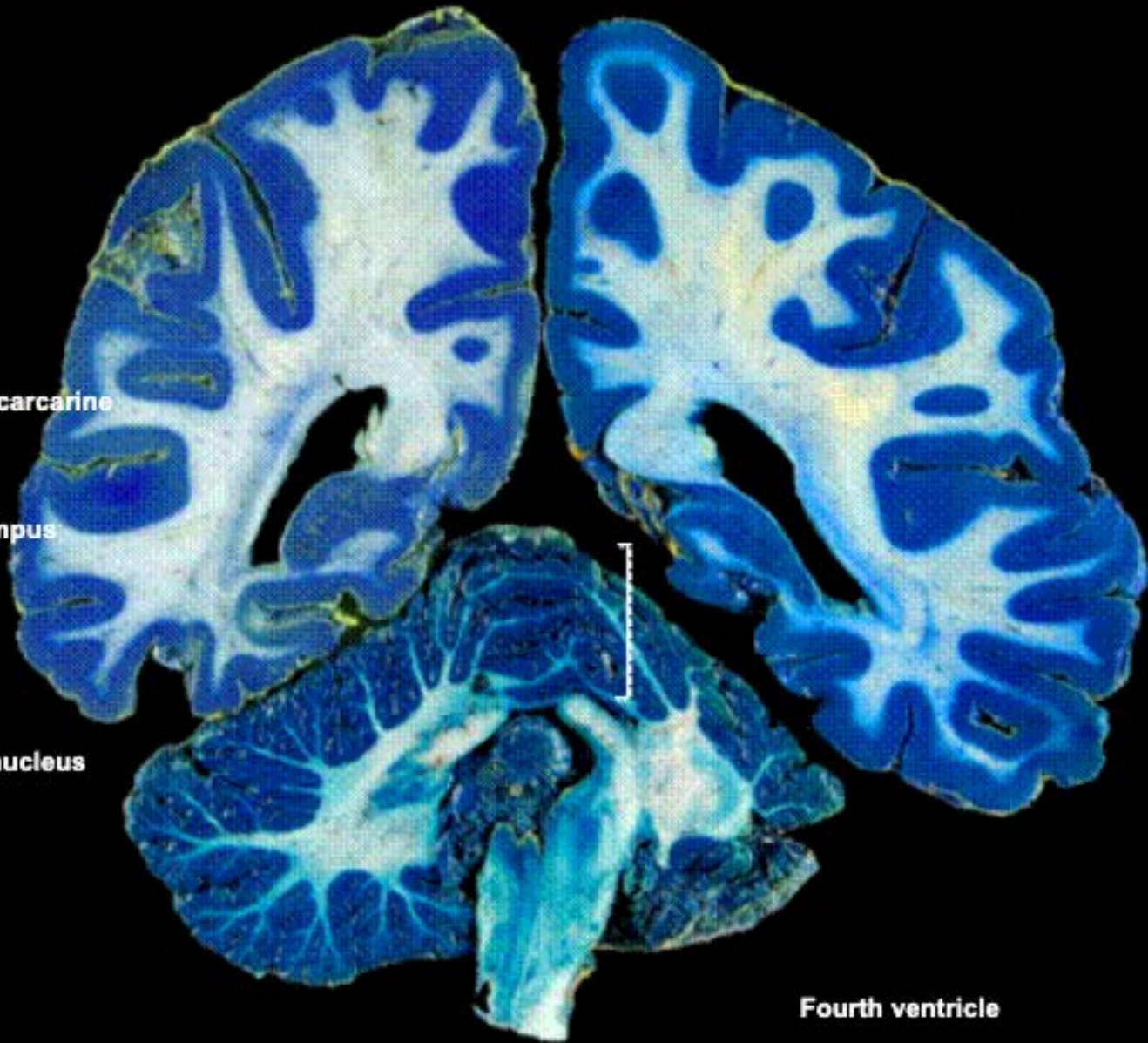
Vermis

Superior
cerebellar
peduncle

Middle
cerebellar
peduncle

Fourth ventricle

Nodulus

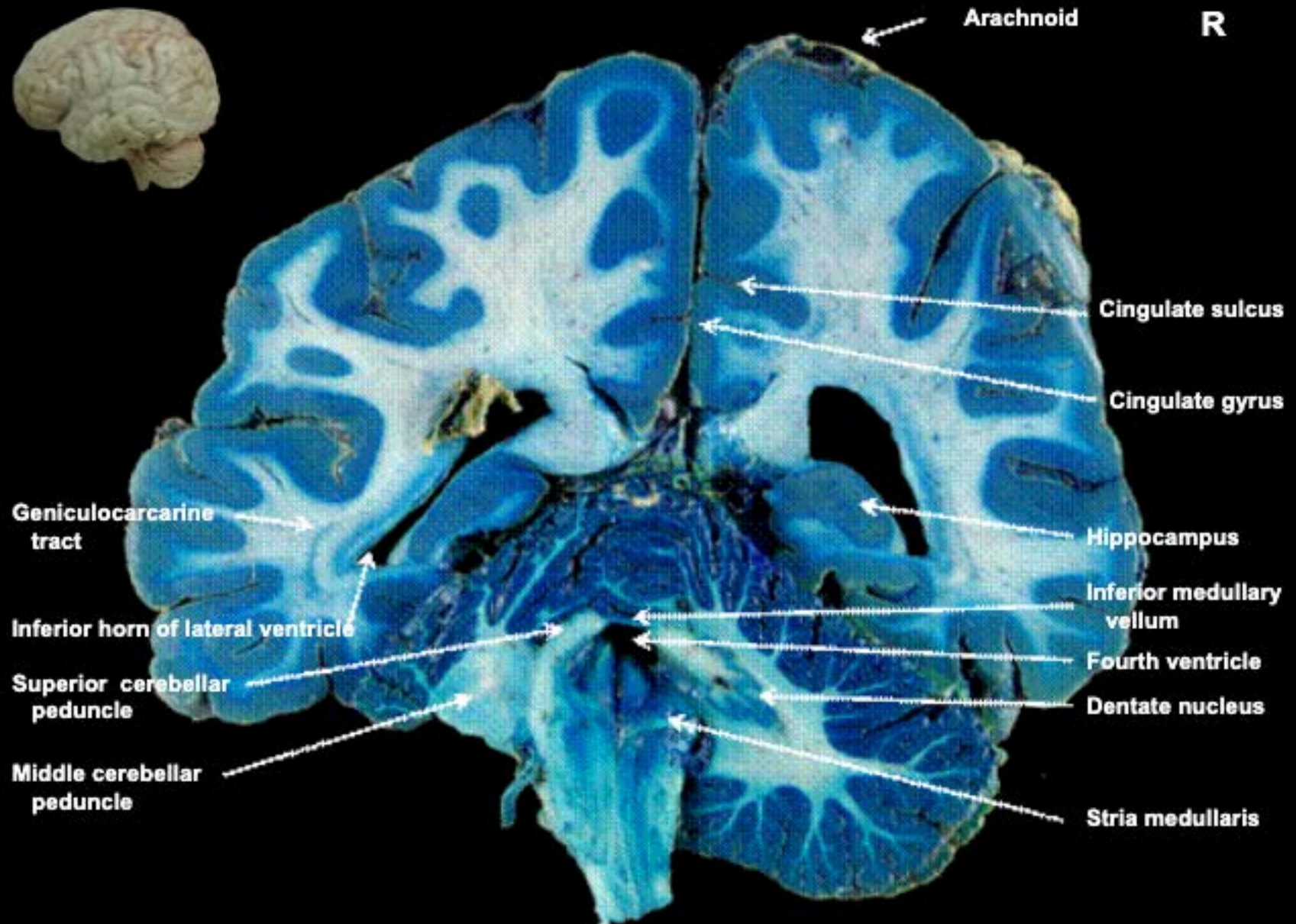


Lateral
fissure



Arachnoid

R



Cingulate sulcus

Cingulate gyrus

Hippocampus

Inferior medullary
vellum

Fourth ventricle

Dentate nucleus

Stria medullaris

Geniculocarcaryne
tract

Inferior horn of lateral ventricle

Superior cerebellar
peduncle

Middle cerebellar
peduncle

**Only the brainstem has been turned over
on the next section**

Lateral
fissure

R



Hippocampus

Superior cerebellar
peduncle

Inferior cerebellar peduncle

Inferior olive

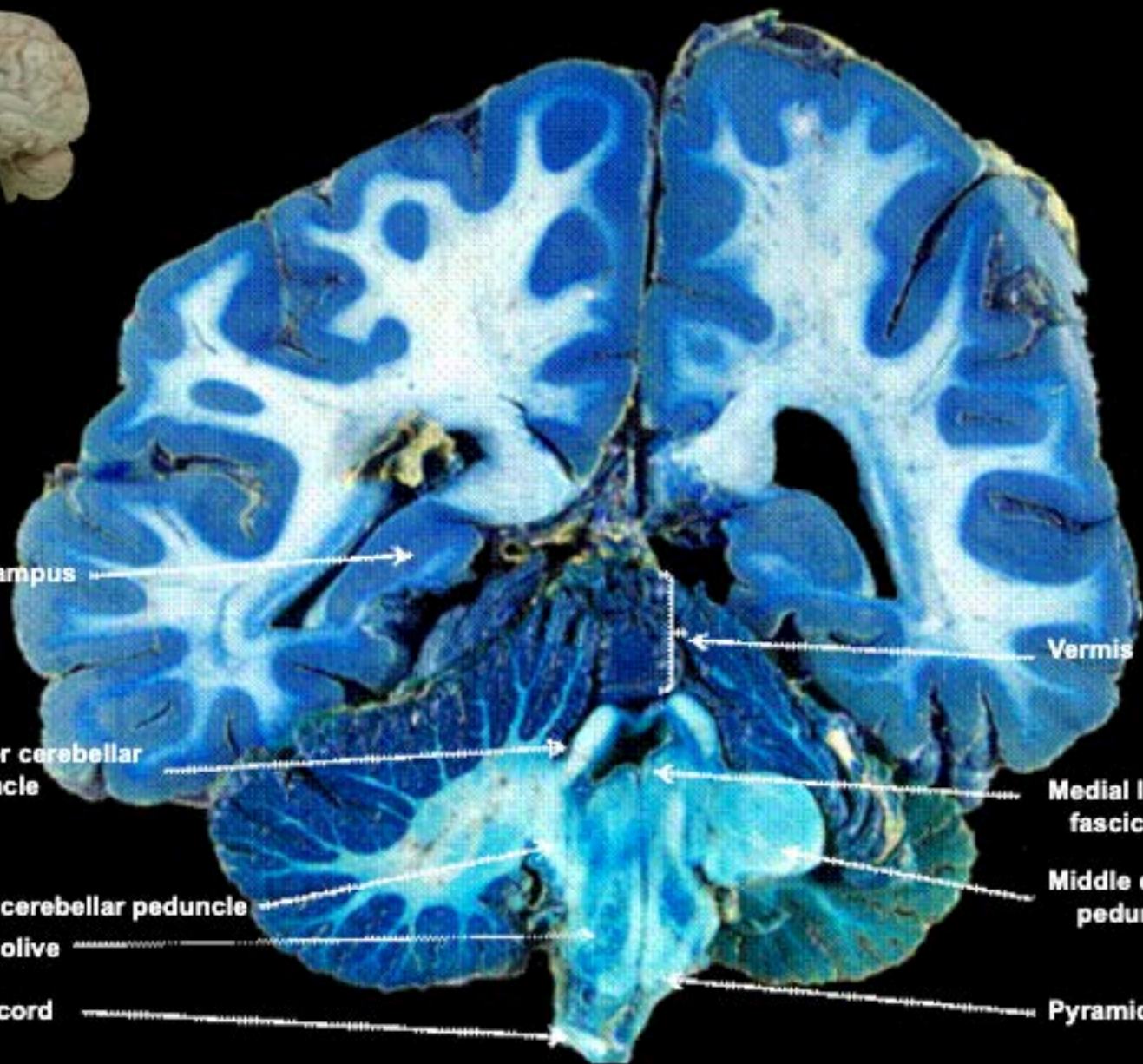
Spinal cord

Vermis

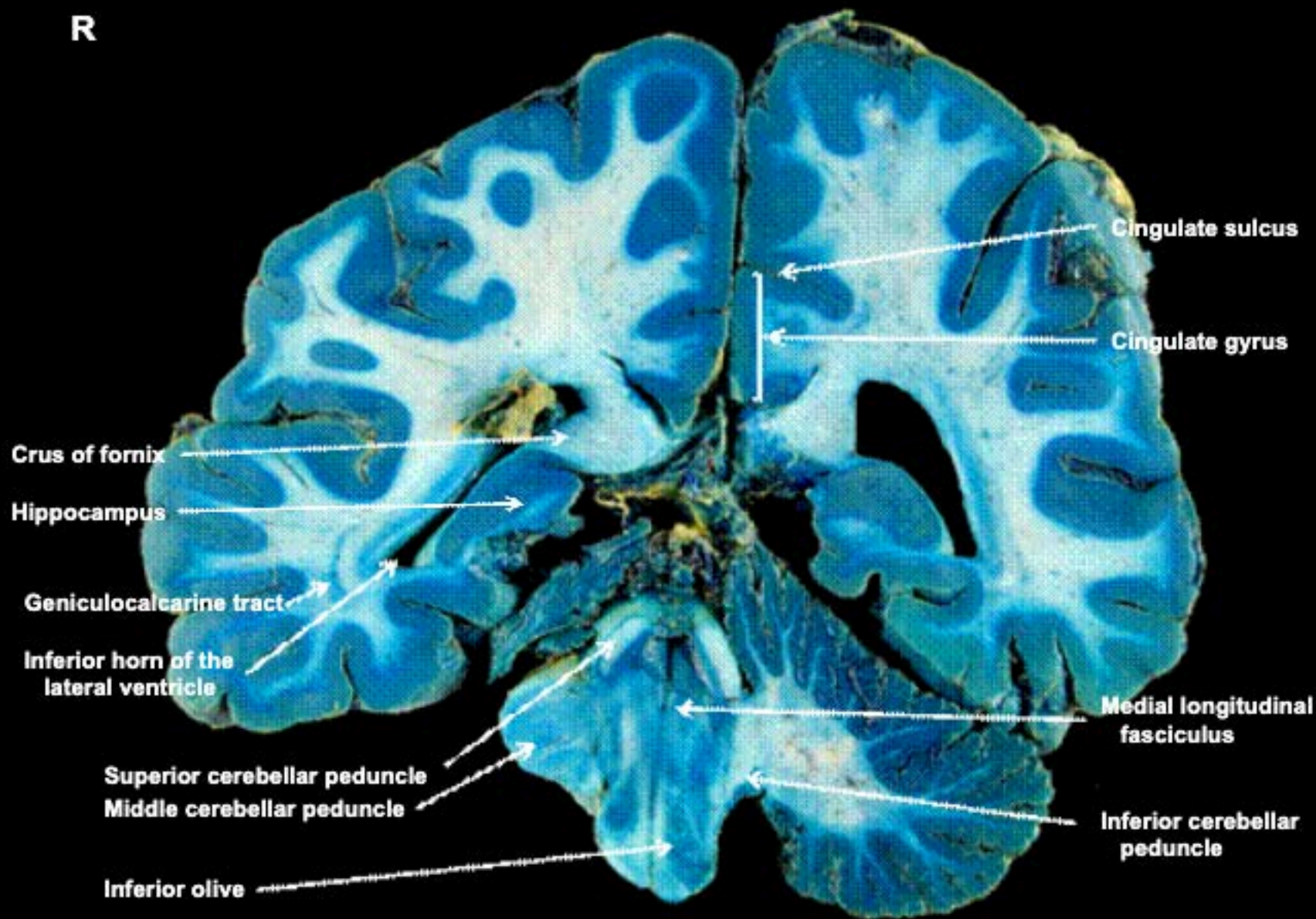
Medial longitudinal
fasciculus

Middle cerebellar
peduncle

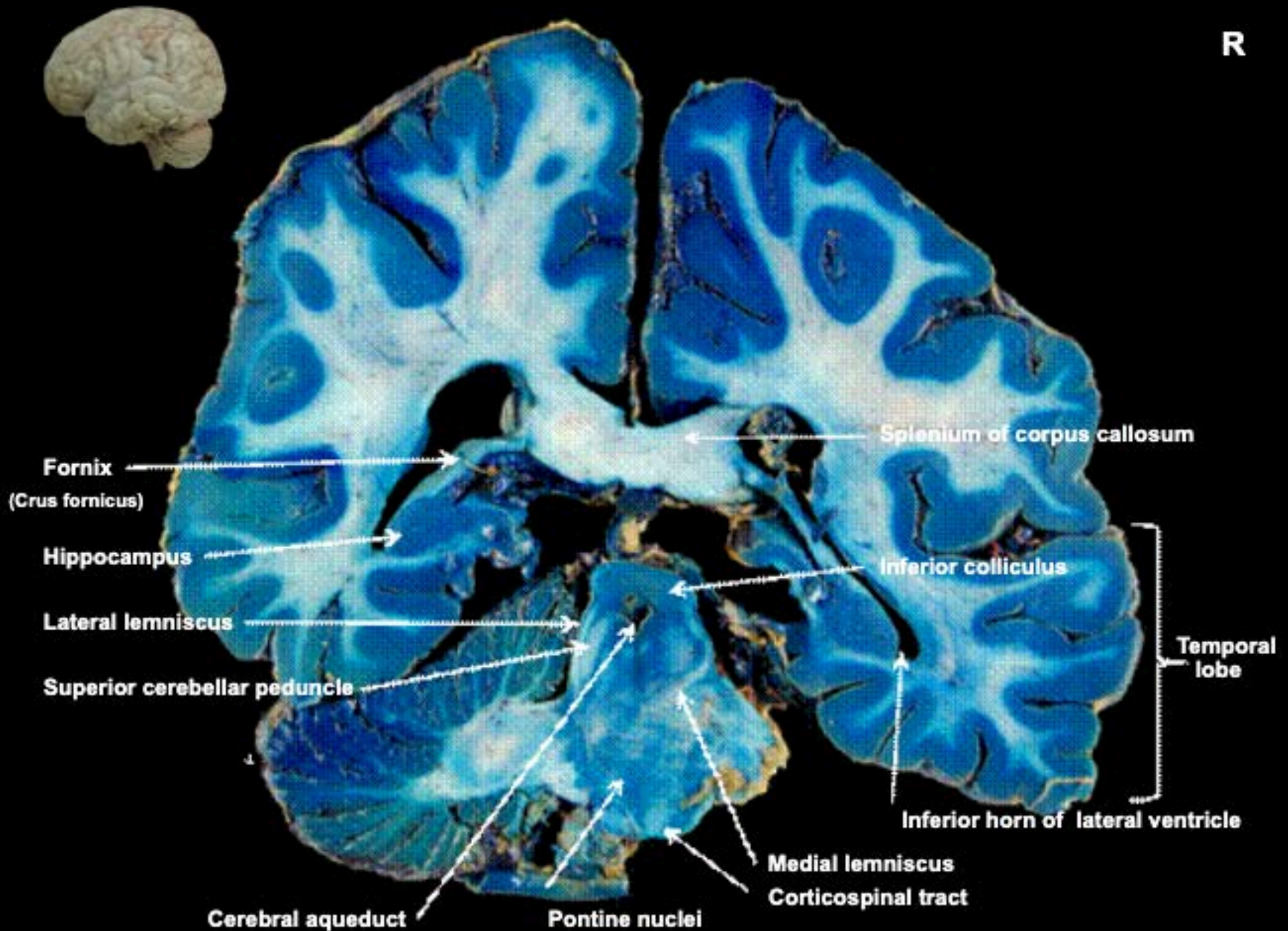
Pyramid



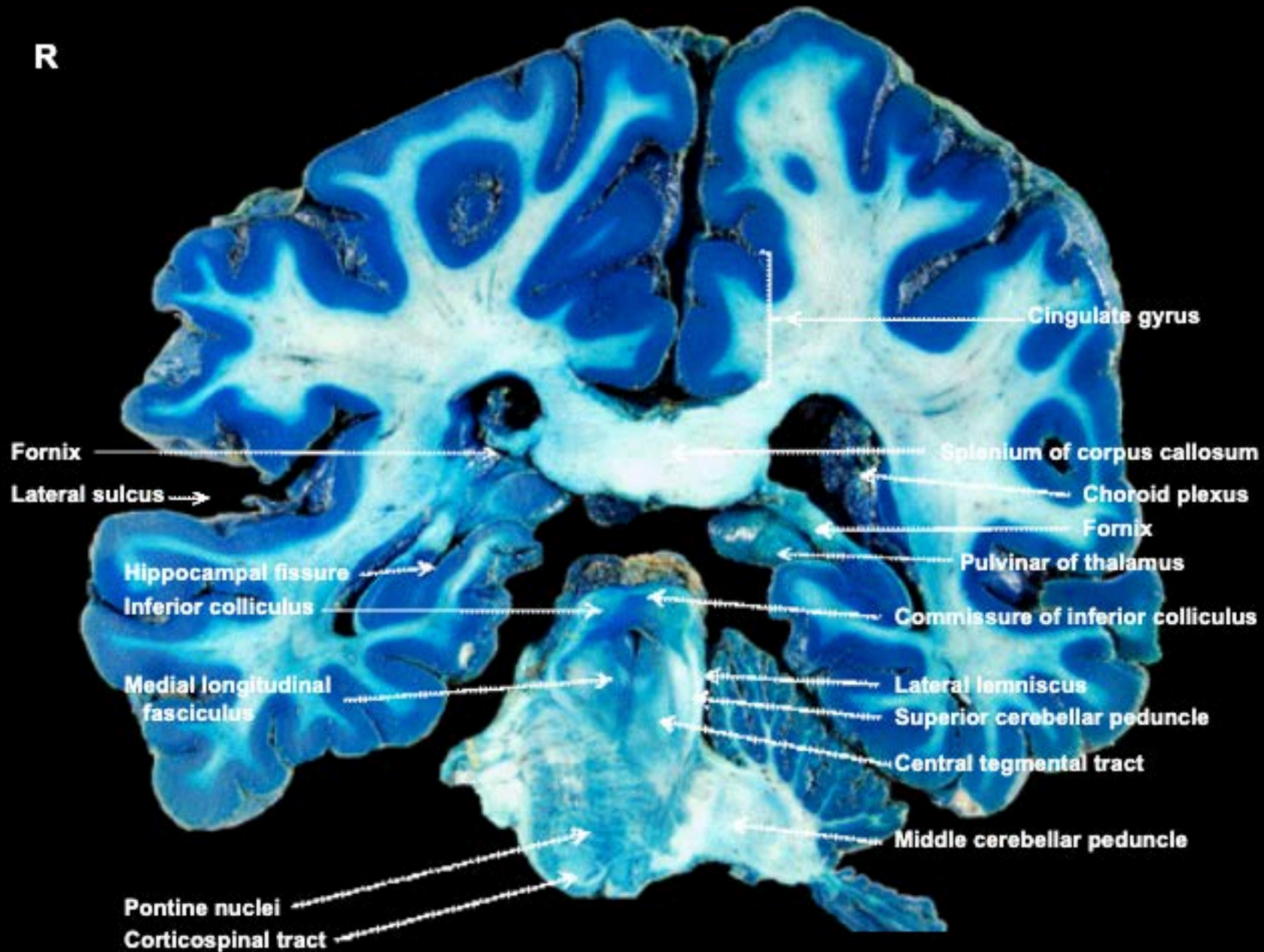
R



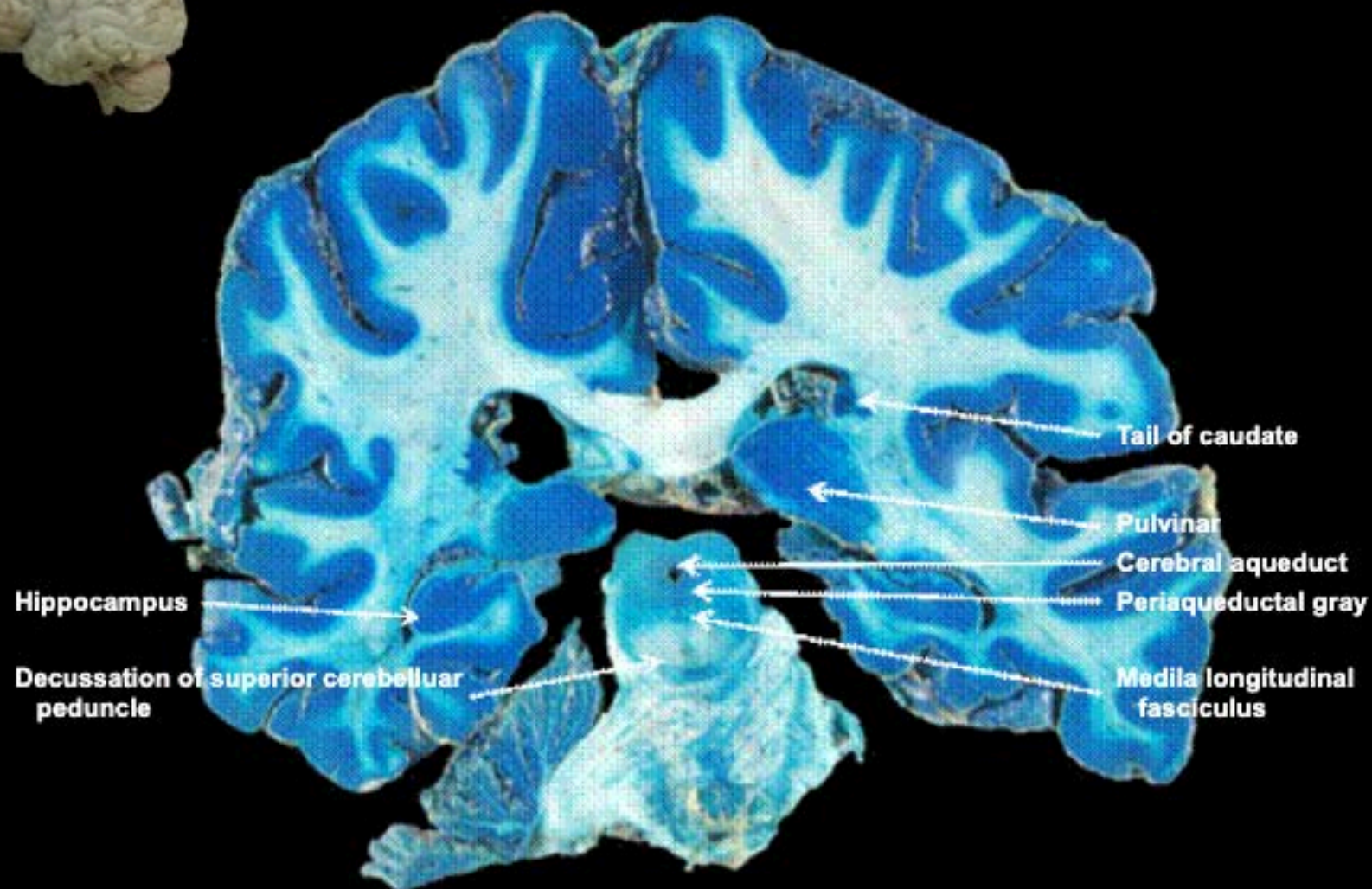
R



R



R



Hippocampus

Decussation of superior cerebellar peduncle

Tail of caudate

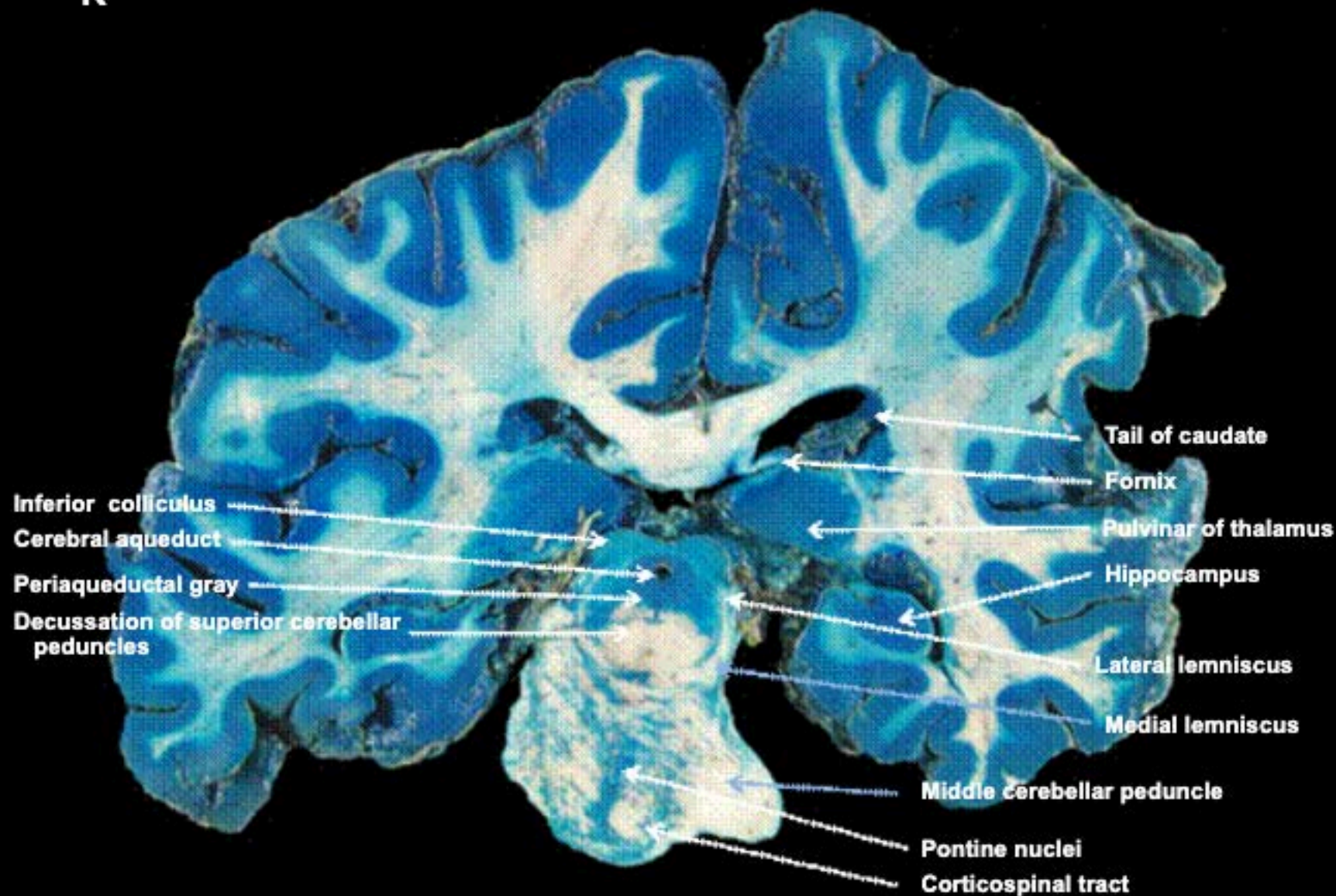
Pulvinar

Cerebral aqueduct

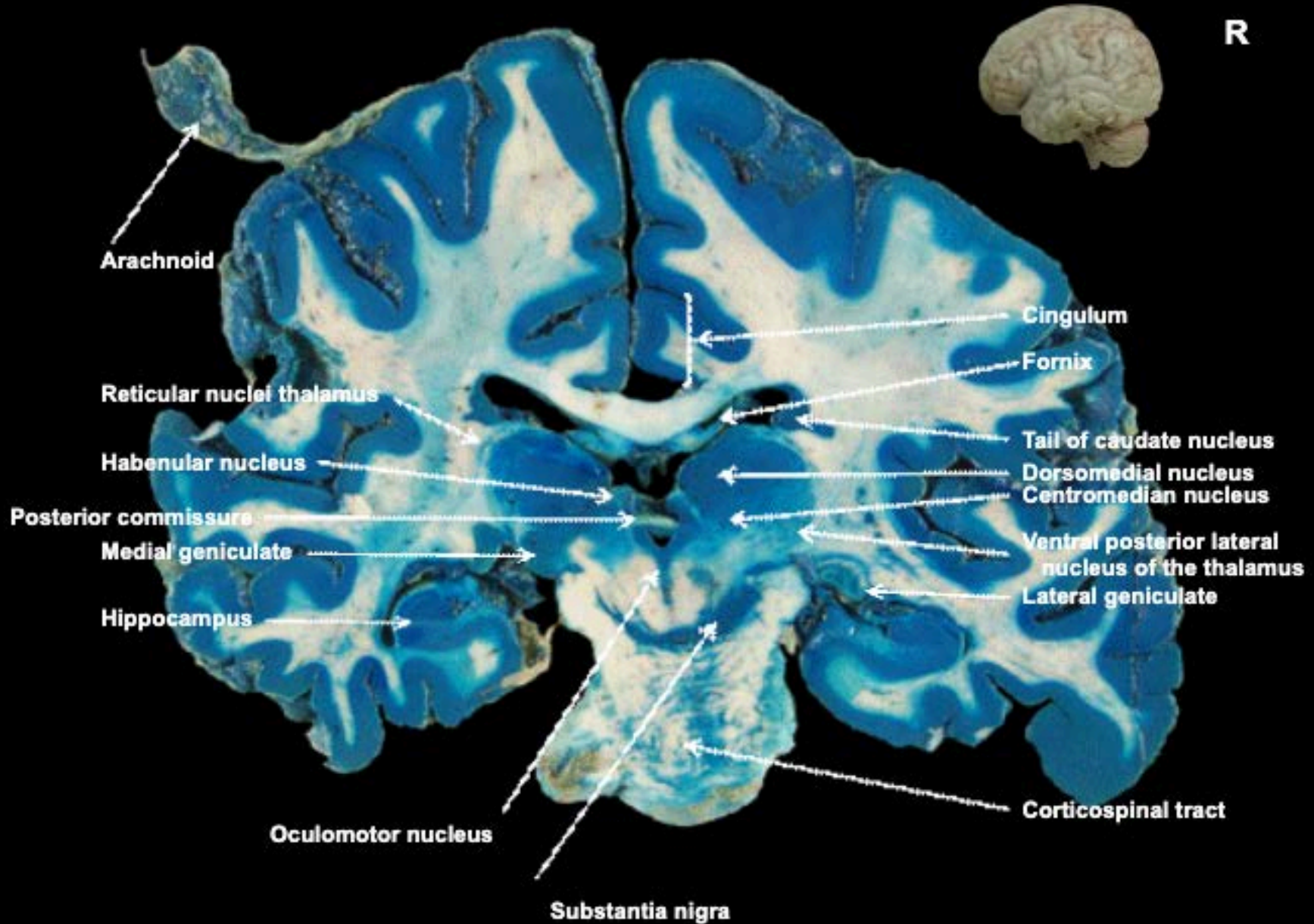
Periaqueductal gray

Medial longitudinal fasciculus

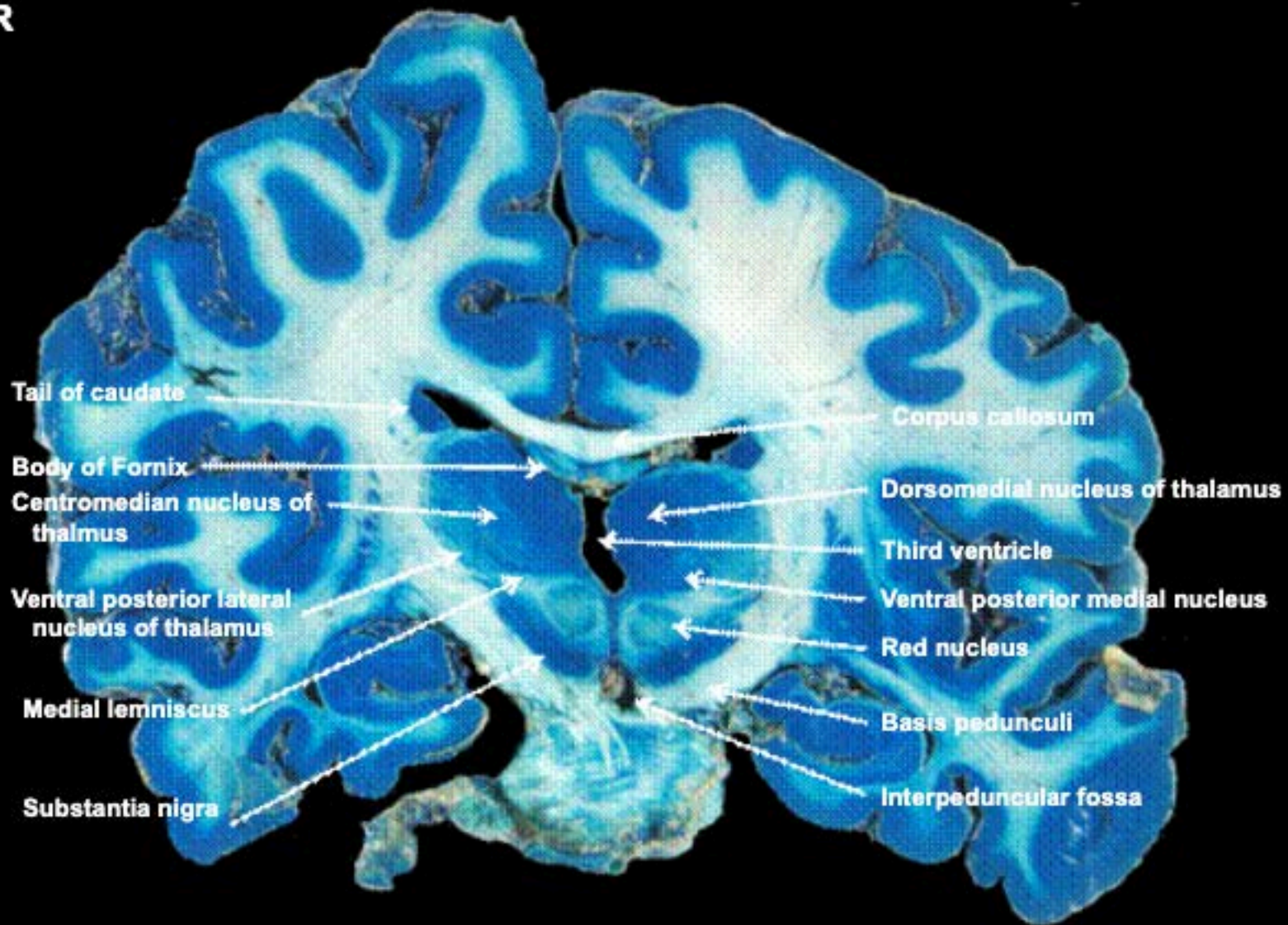
R



R



R





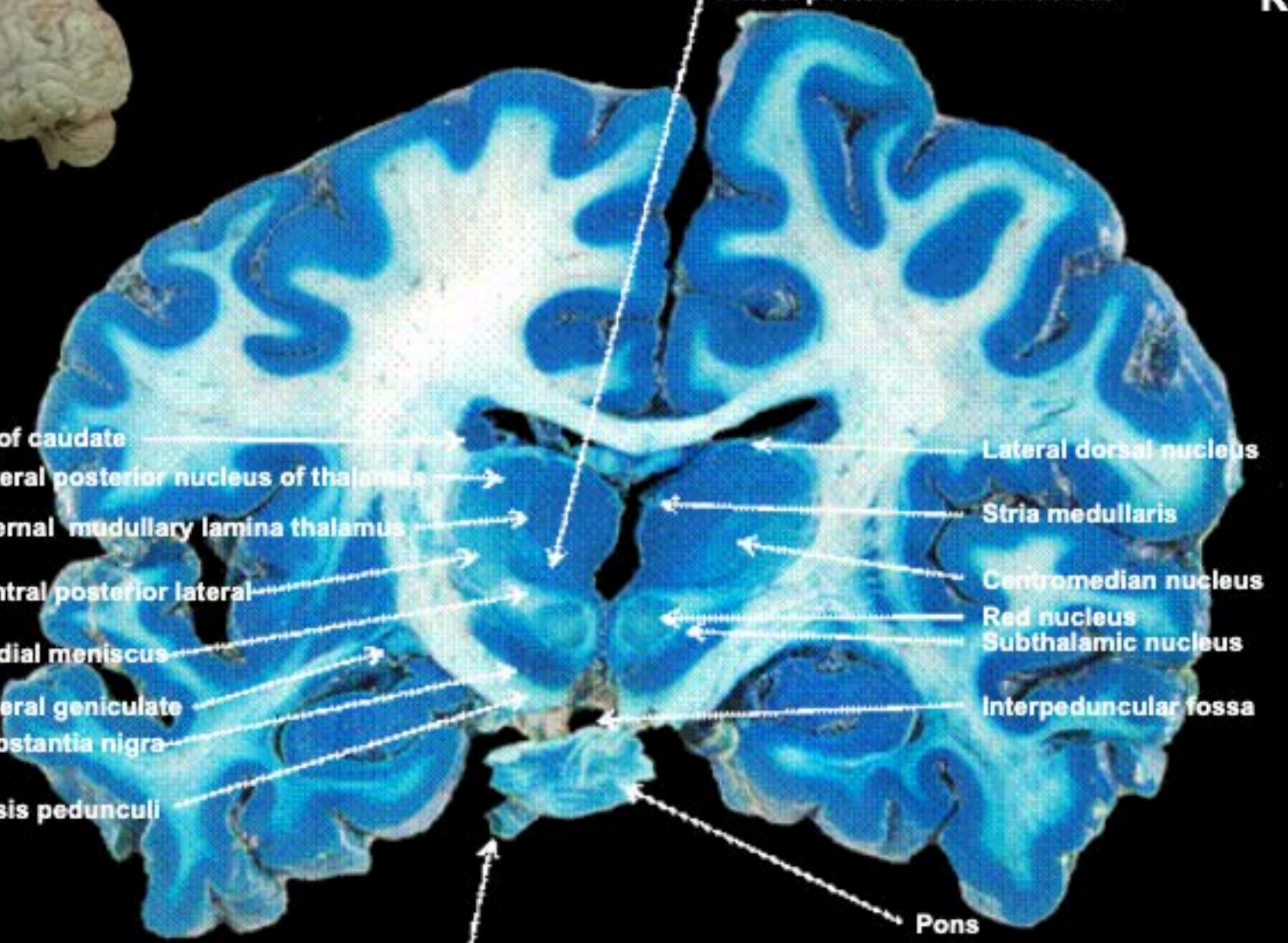
Ventral posterior medial nucleus

R

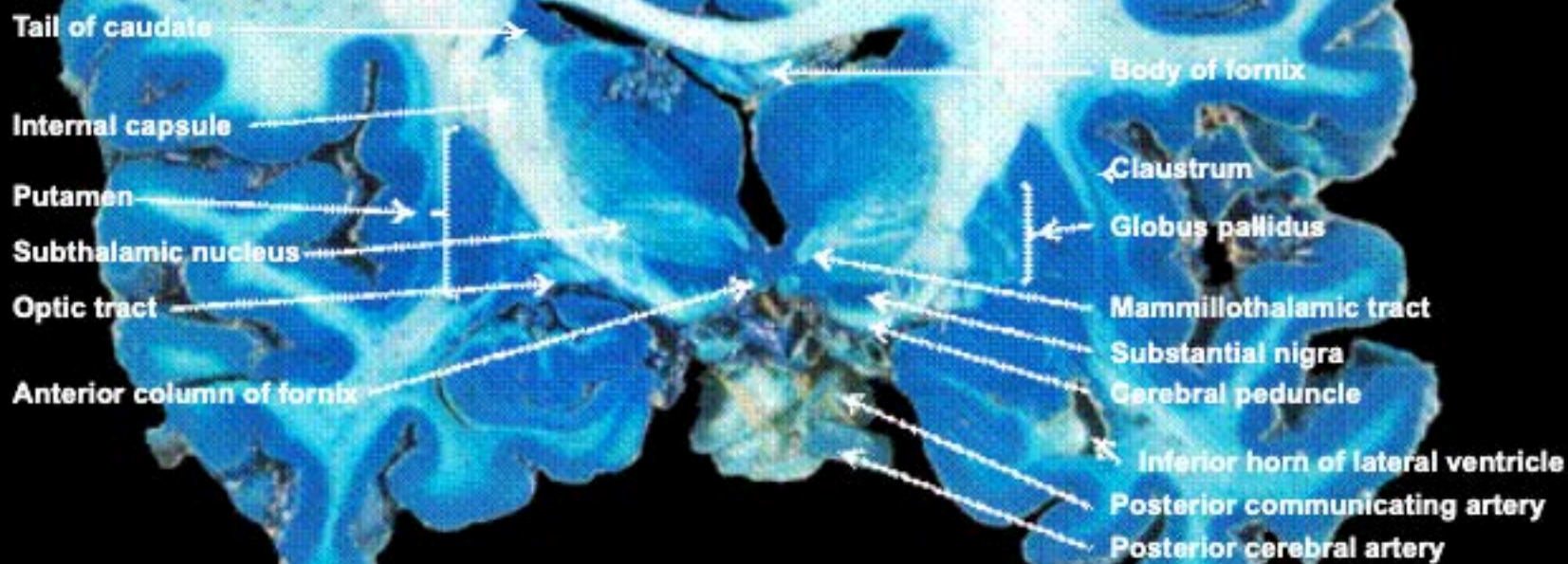
Tail of caudate
 Lateral posterior nucleus of thalamus
 Internal medullary lamina thalamus
 Ventral posterior lateral
 Medial meniscus
 Lateral geniculate
 Substantia nigra
 Basis pedunculi
 Posterior cerebral artery

Lateral dorsal nucleus
 Stria medullaris
 Centromedian nucleus
 Red nucleus
 Subthalamic nucleus
 Interpeduncular fossa

Pons



R



External medullary lamina (thalamus)

R

Internal medullary lamina (thalamus)

Internal capsule

Ventral lateral nucleus

Extreme capsule

Clastrum

External capsule

Putamen

Insula

External medullary lamina

Thalamic fasciculus

globus pallidus

Mammillothalamic tract

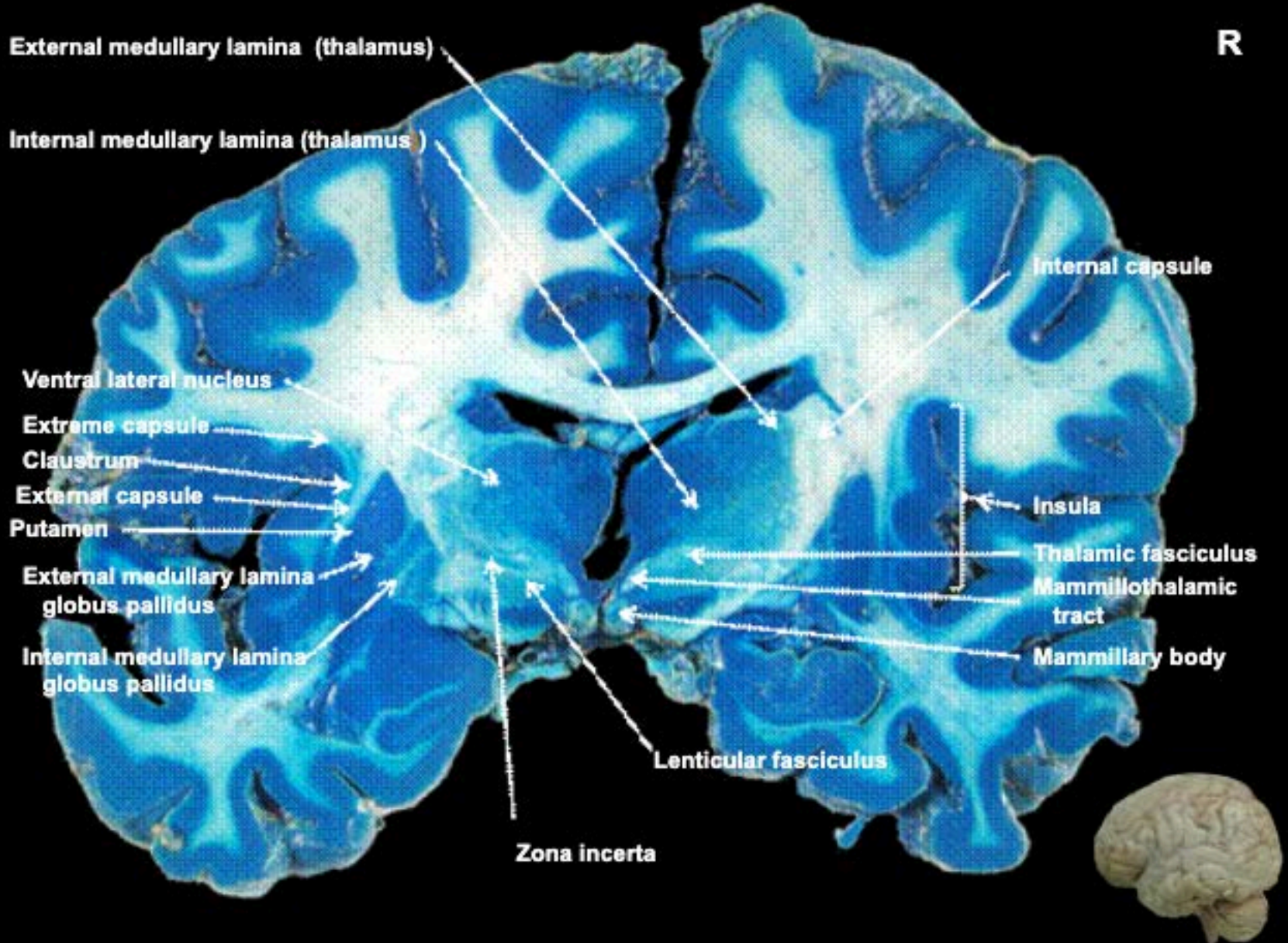
Internal medullary lamina

Mammillary body

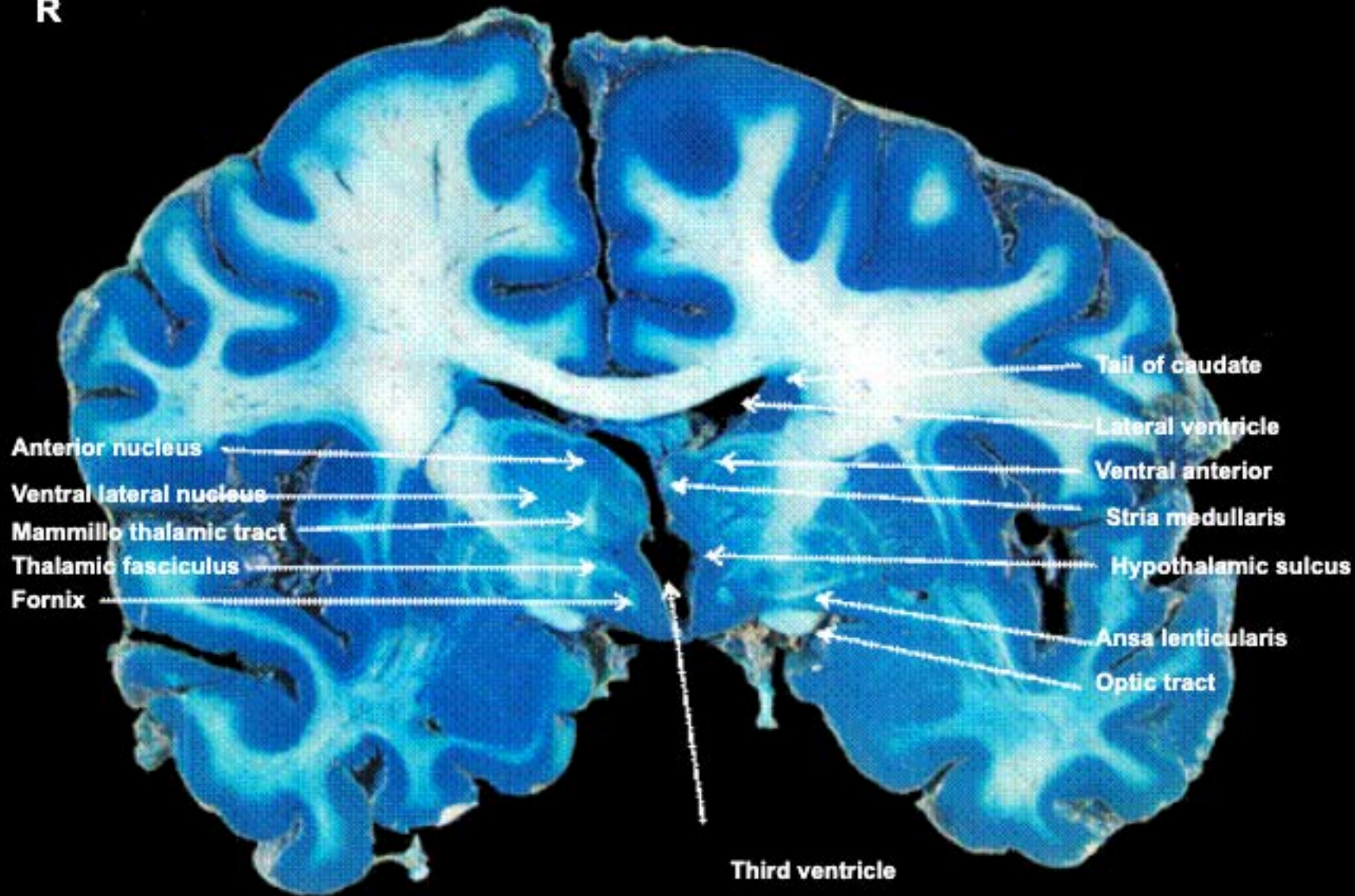
globus pallidus

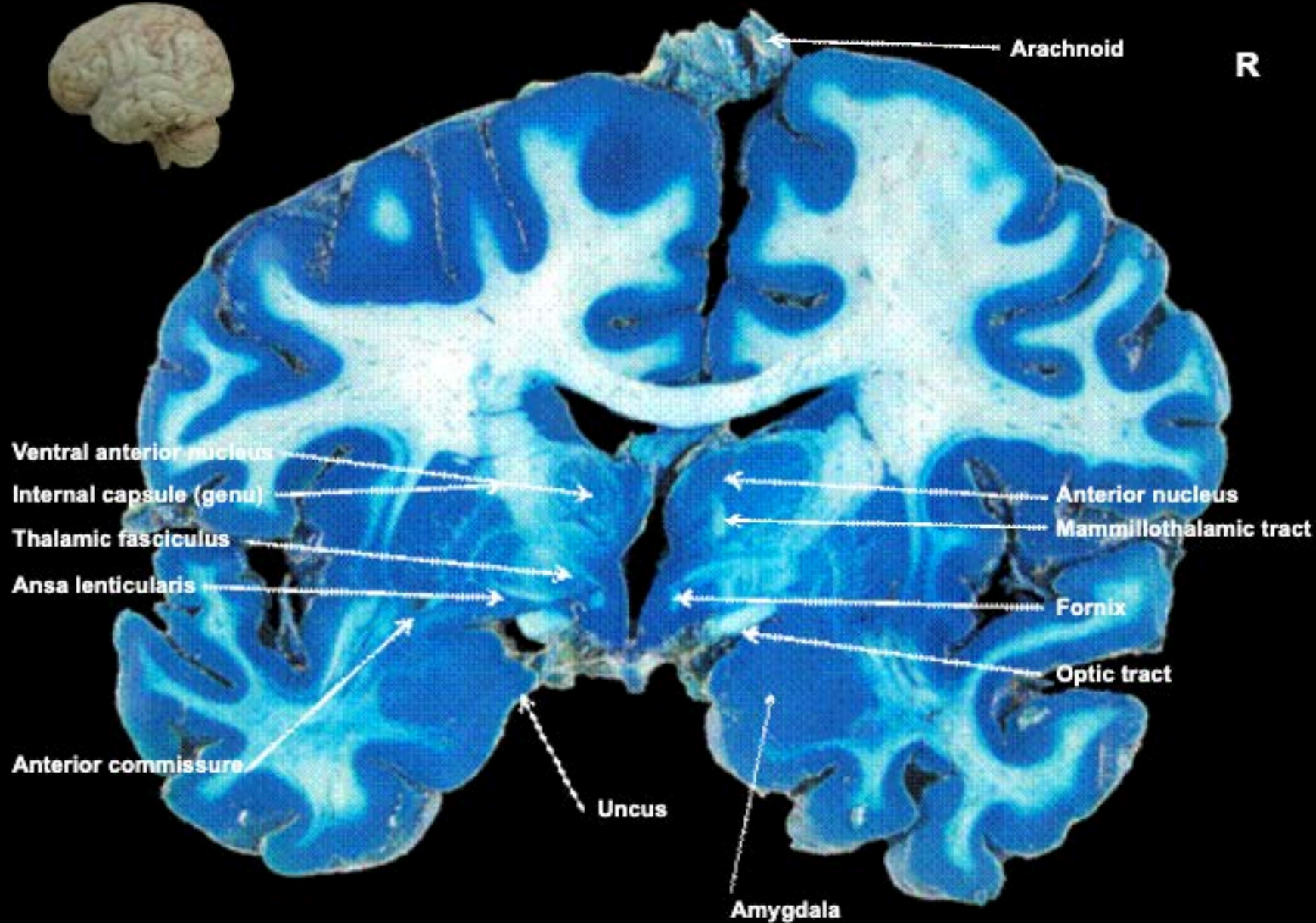
Lenticular fasciculus

Zona incerta

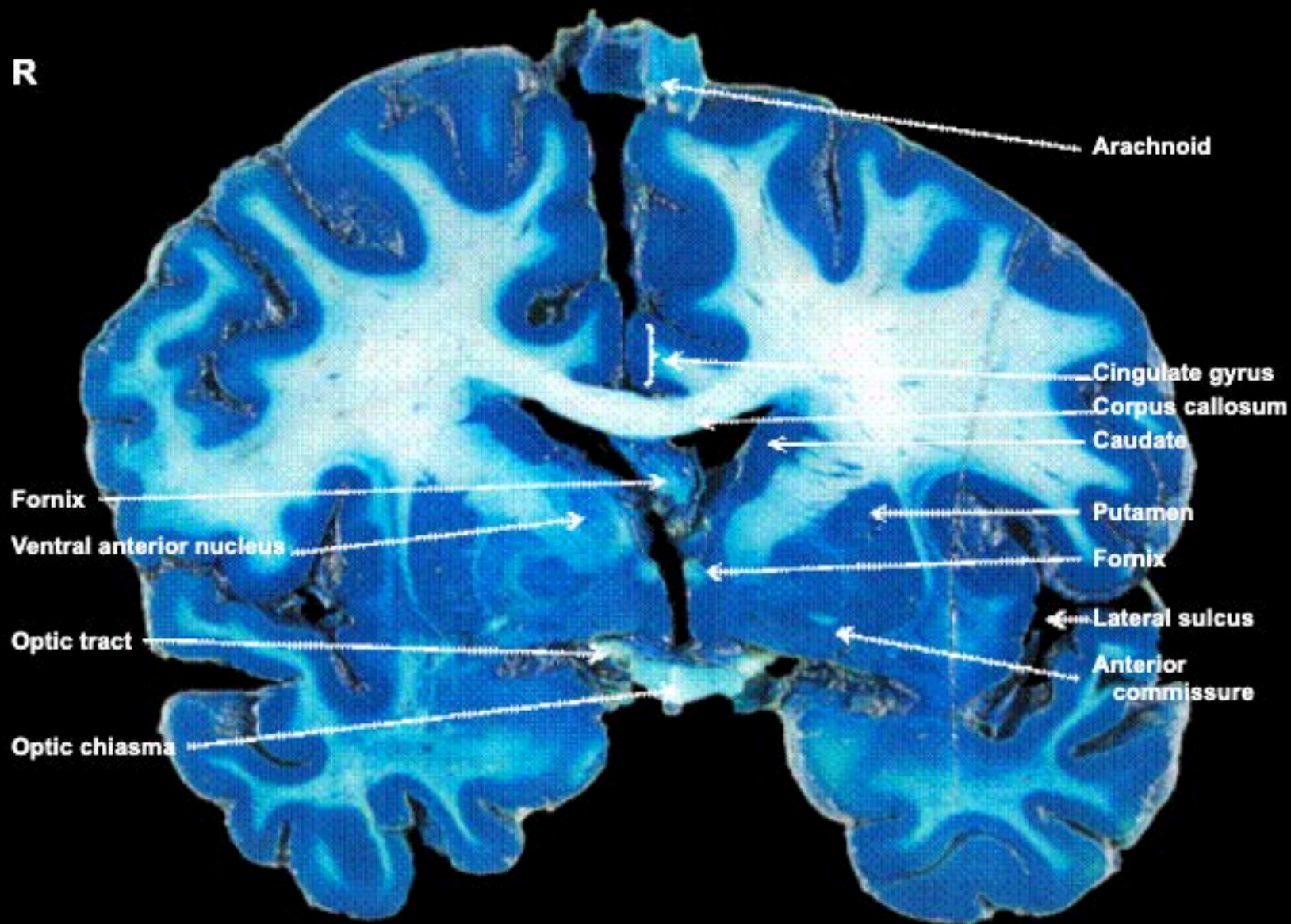


R

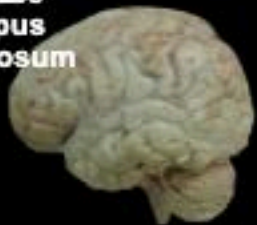




R



**Longitudinal
fissure
corpus
callosum**



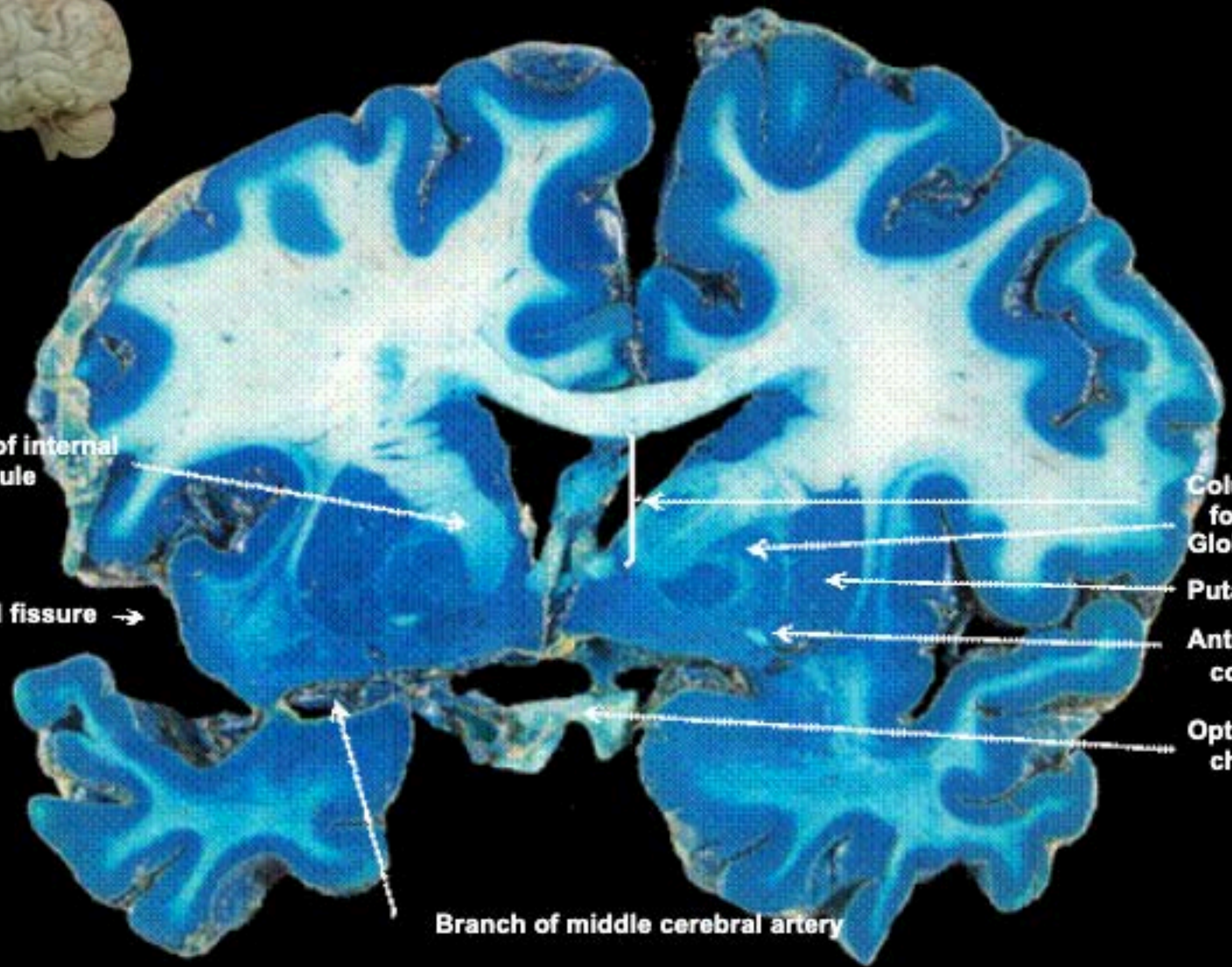
R

**Genu of internal
capsule**

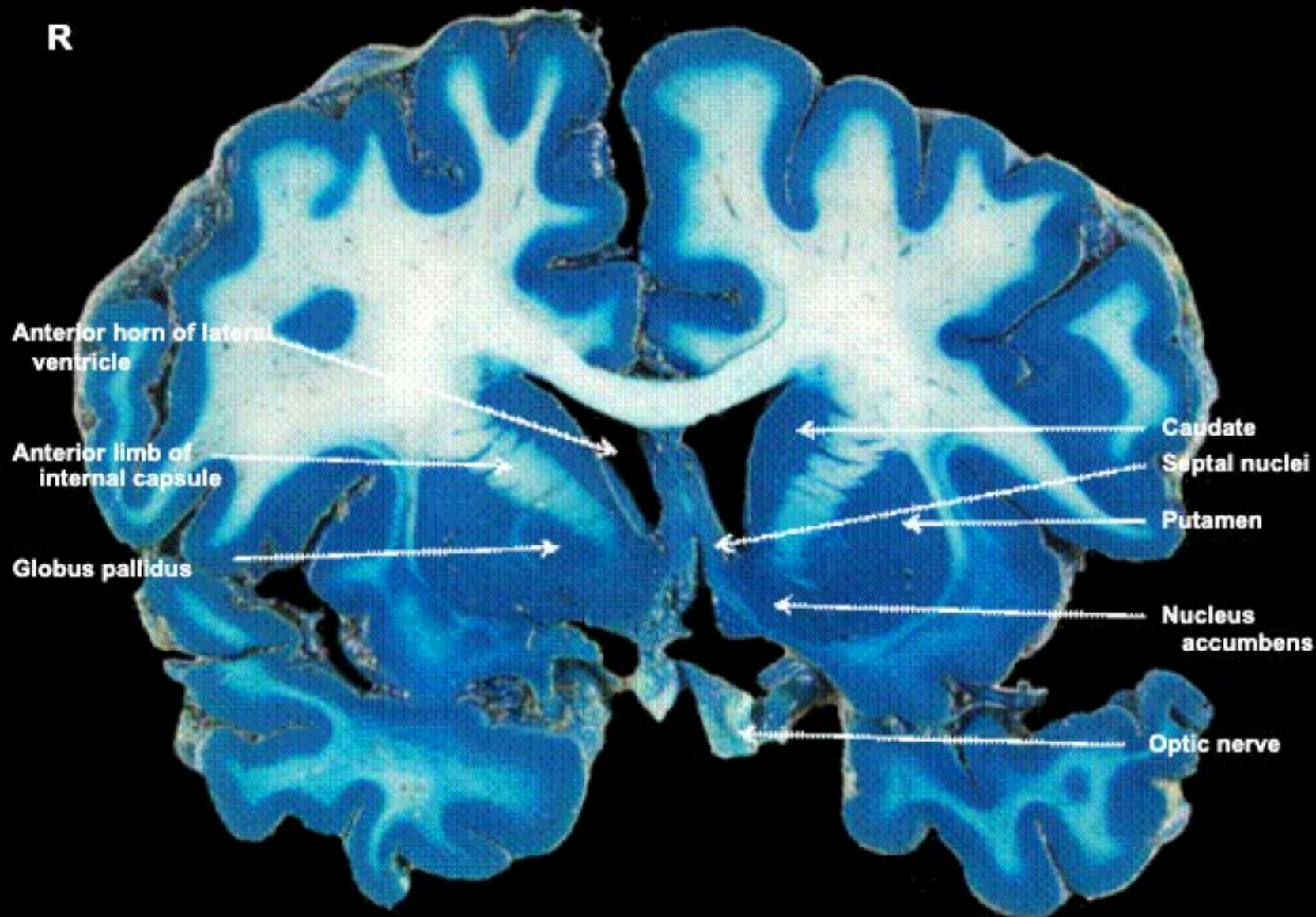
Lateral fissure →

Branch of middle cerebral artery

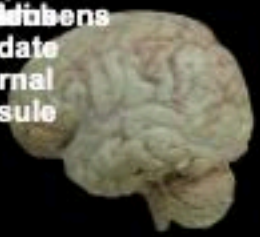
**Column of
fornix
Globus pallidus
Putamen
Anterior
commissure
Optic
chiasm**



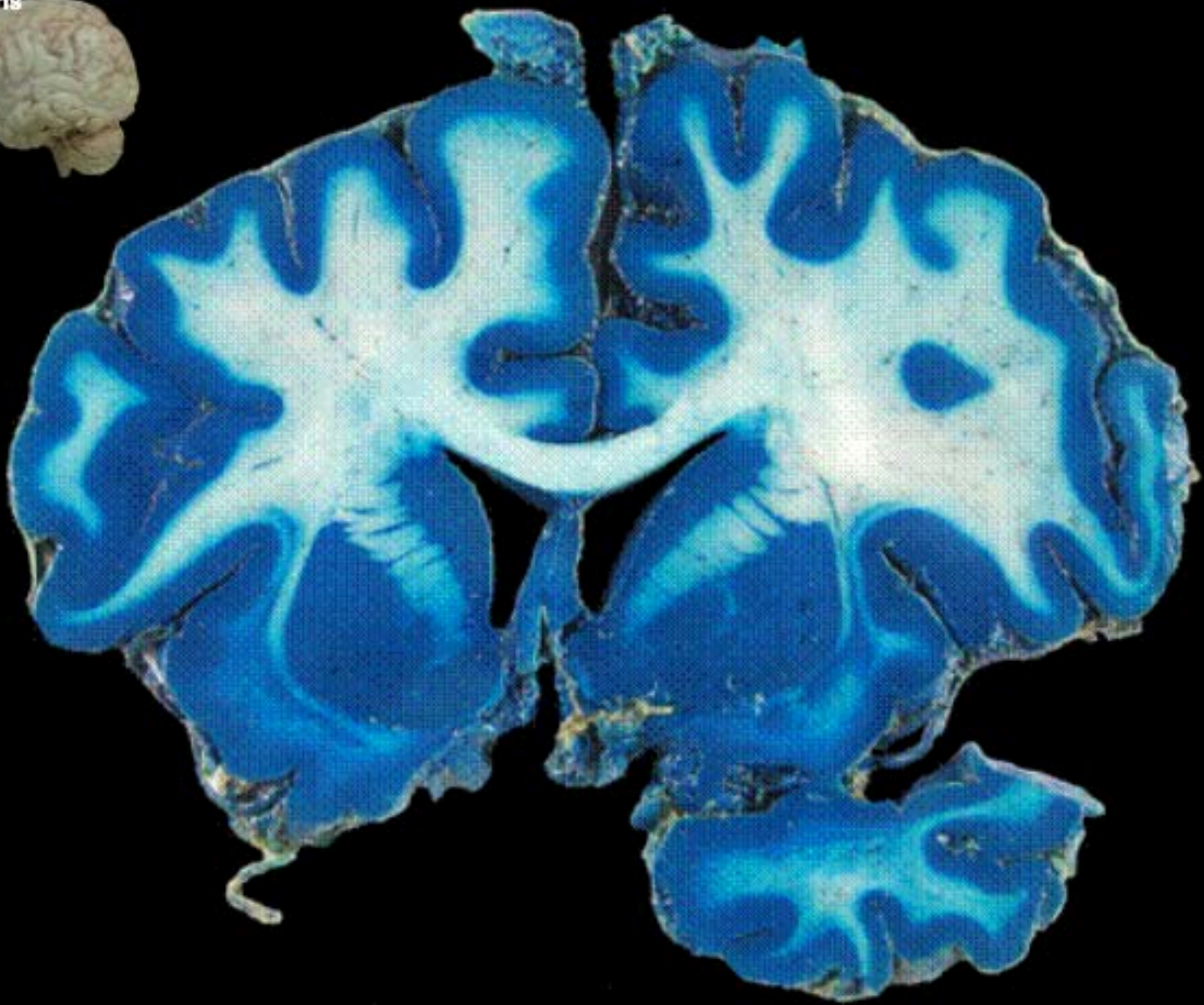
R



caudate
internal
capsule



R



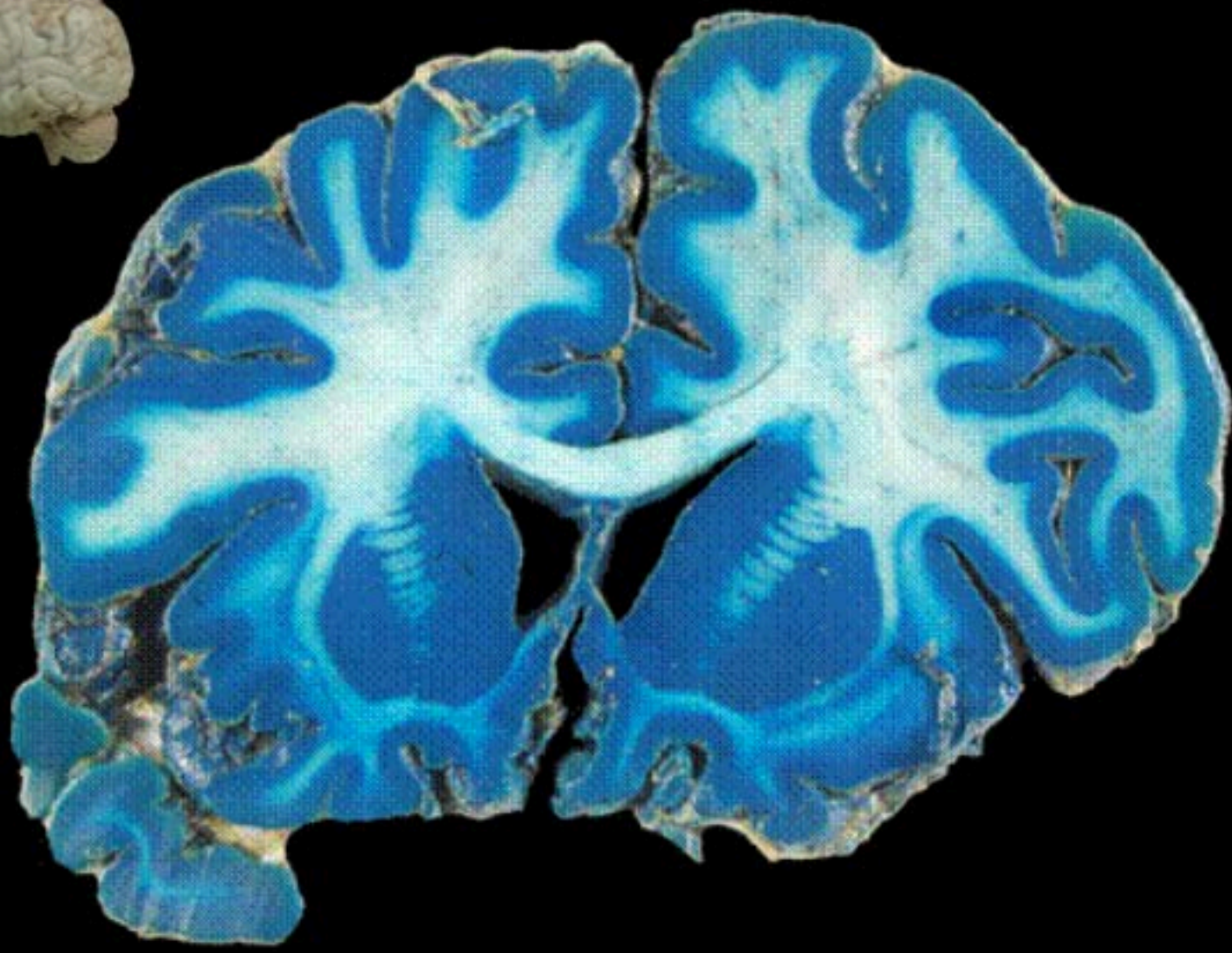
R



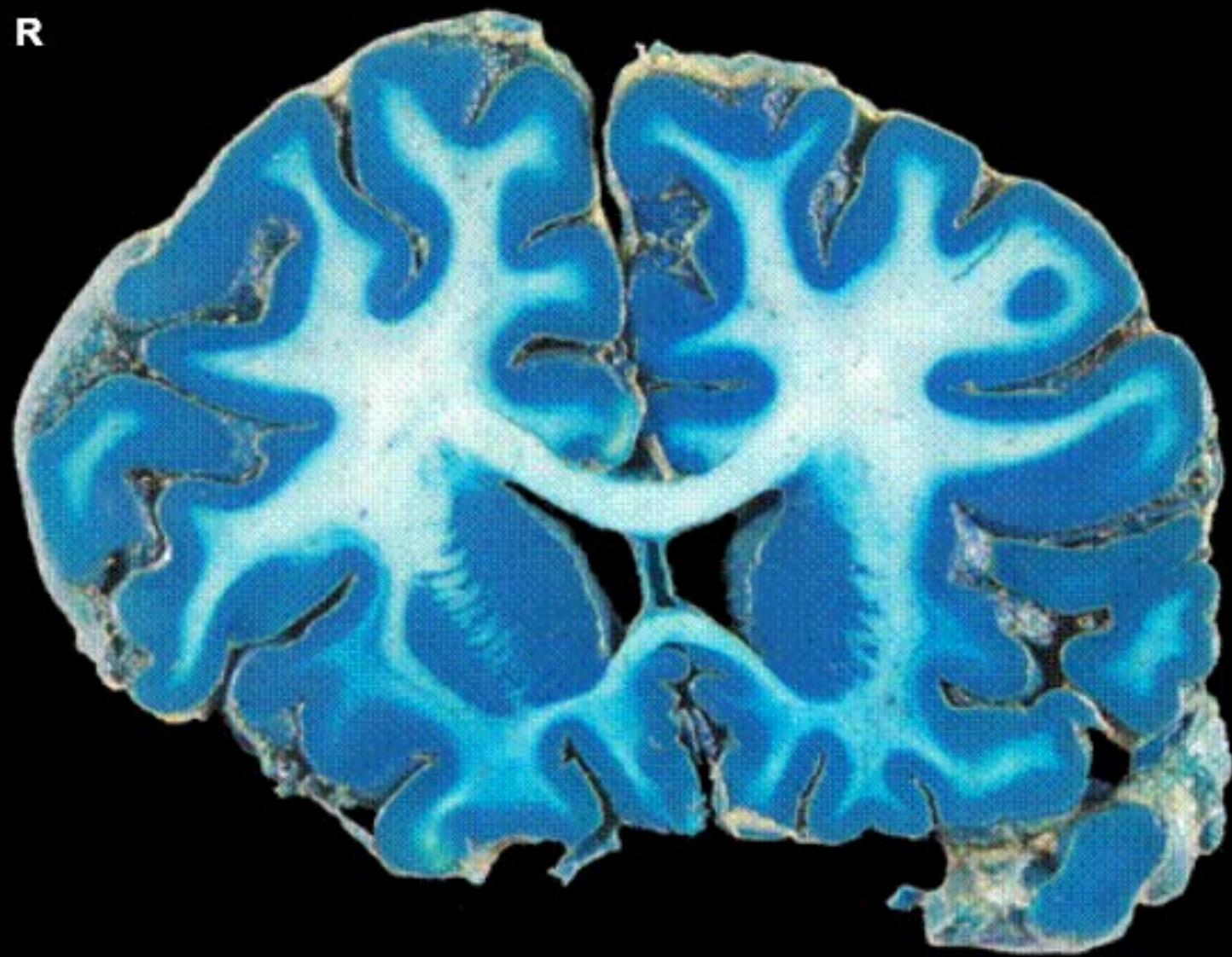
Elapaterium
peppizidum
caudate

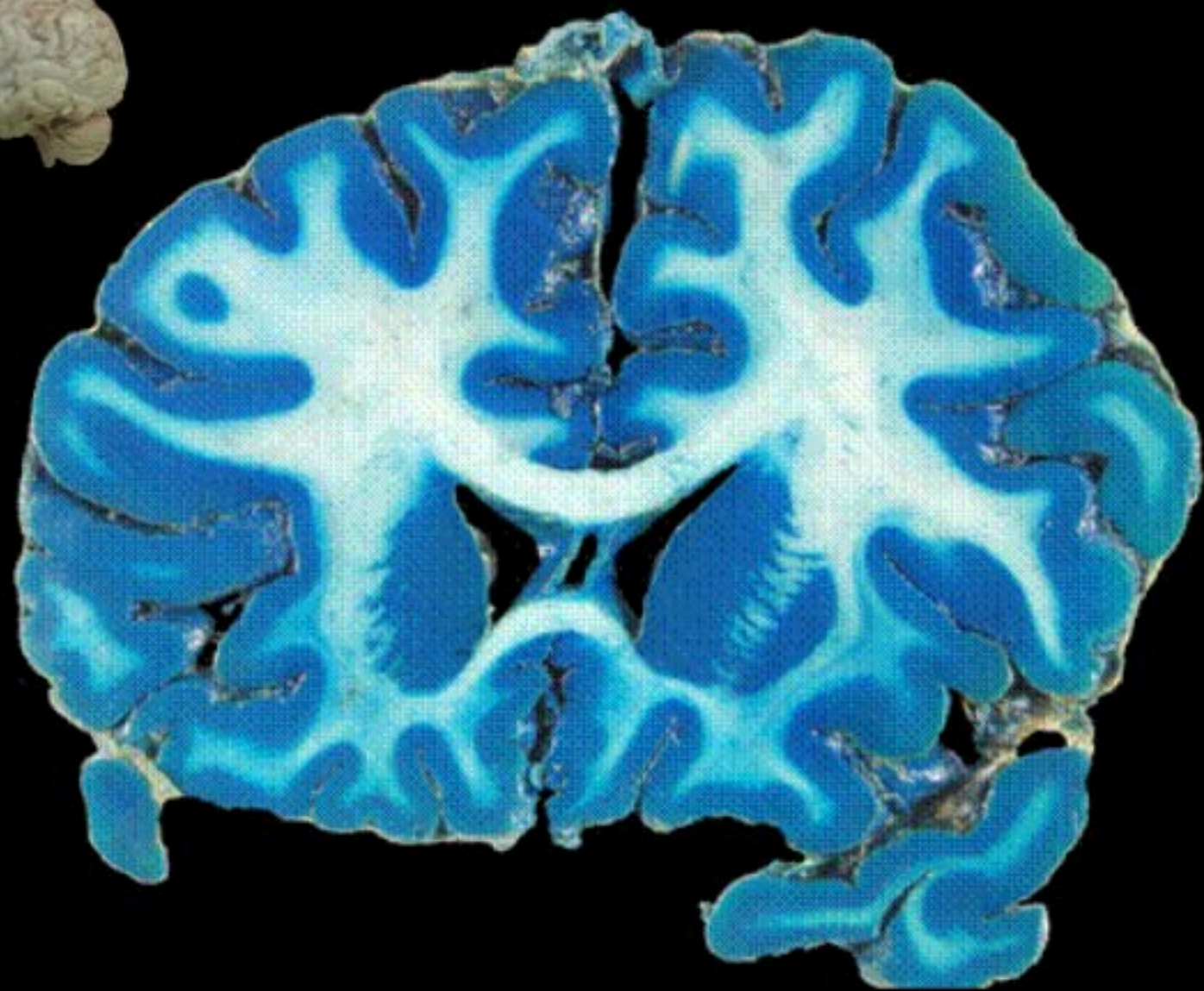


R



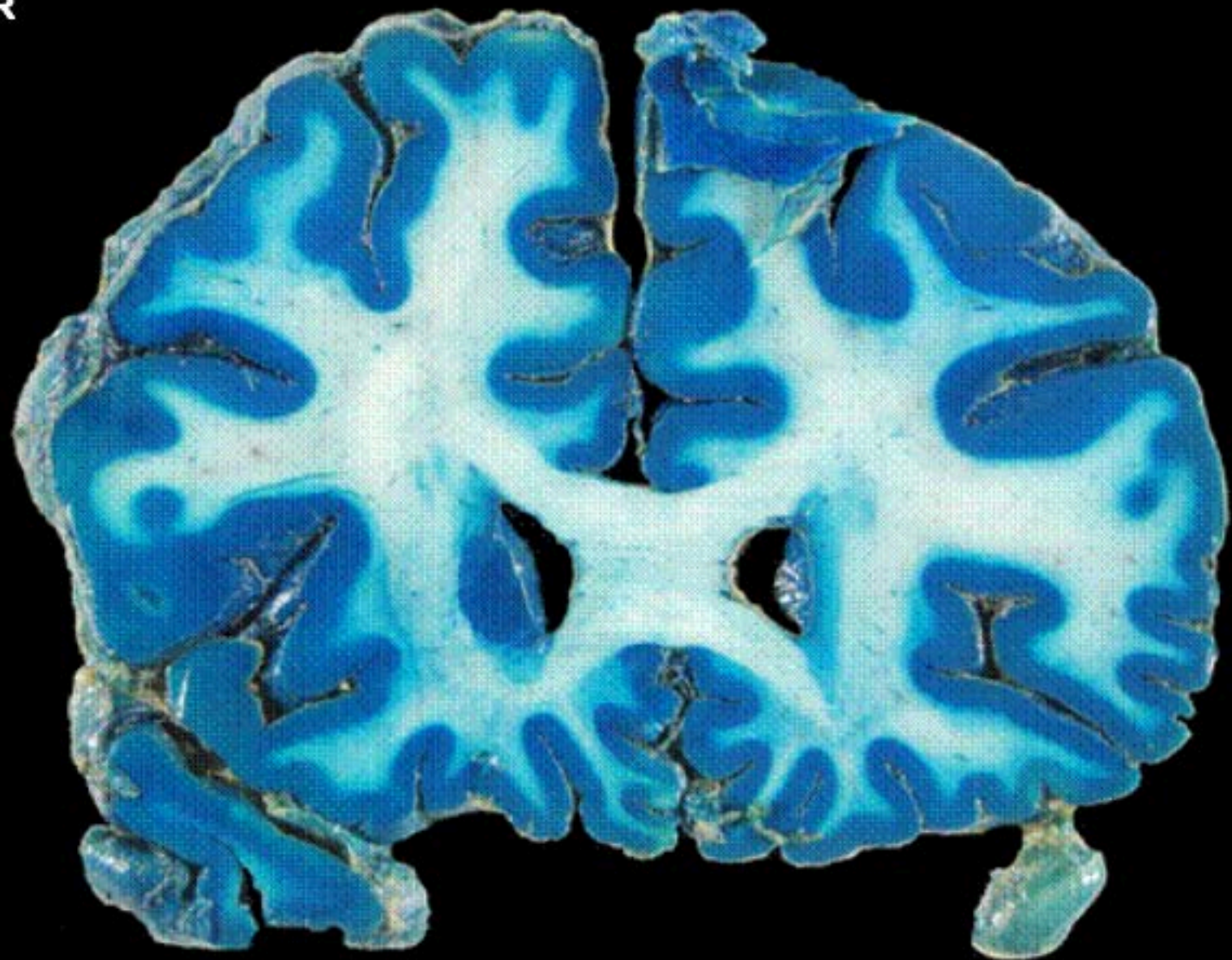
R

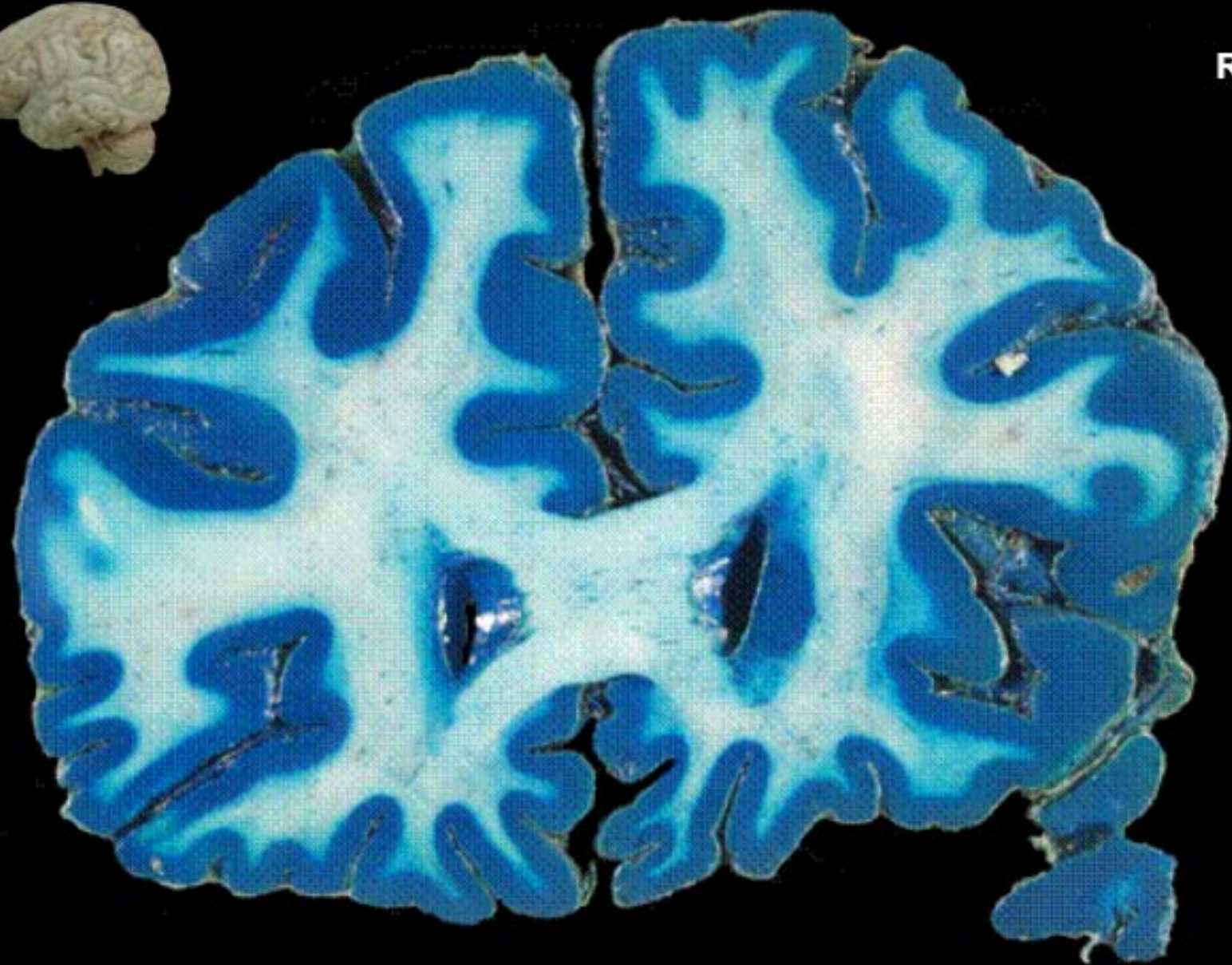




R

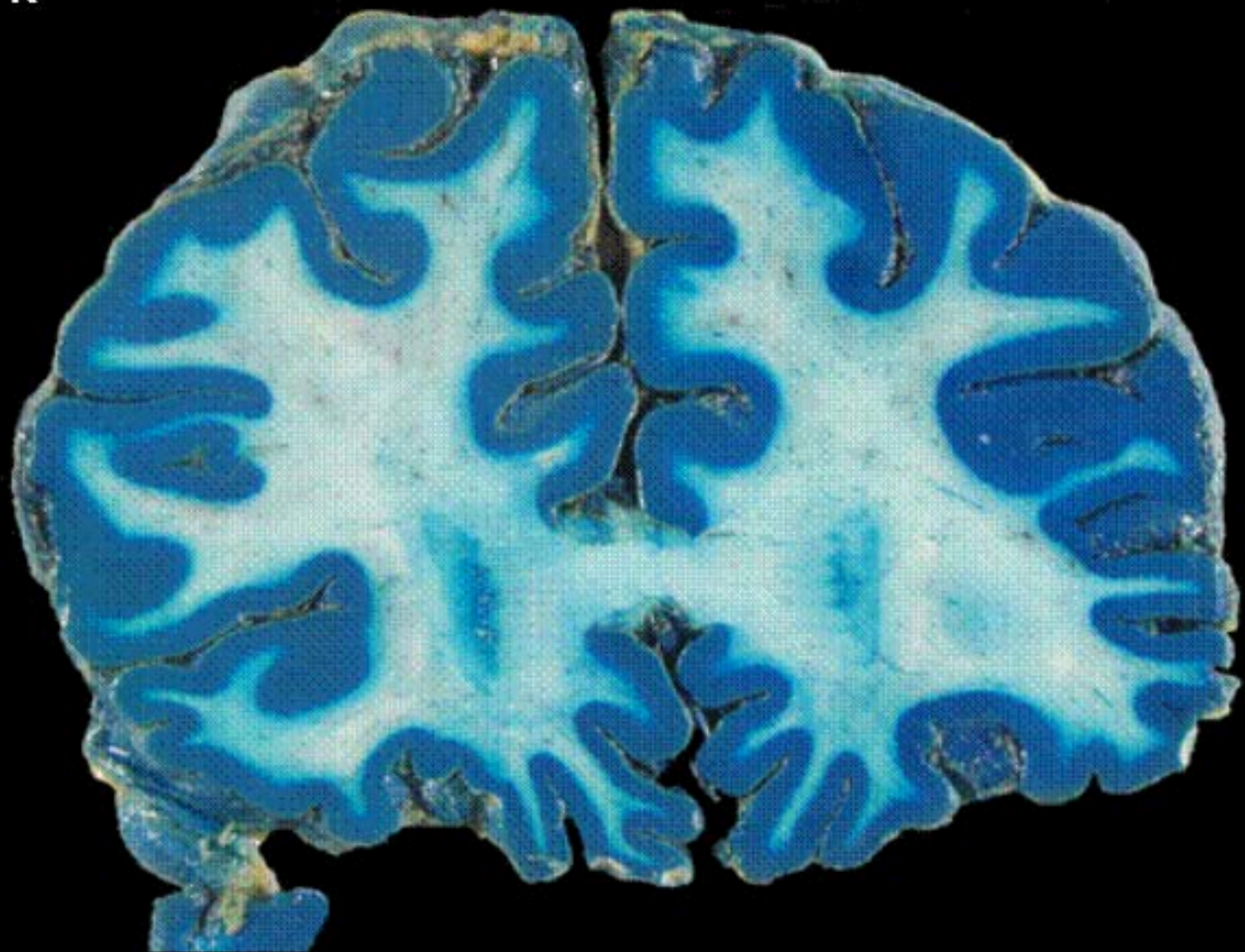
R





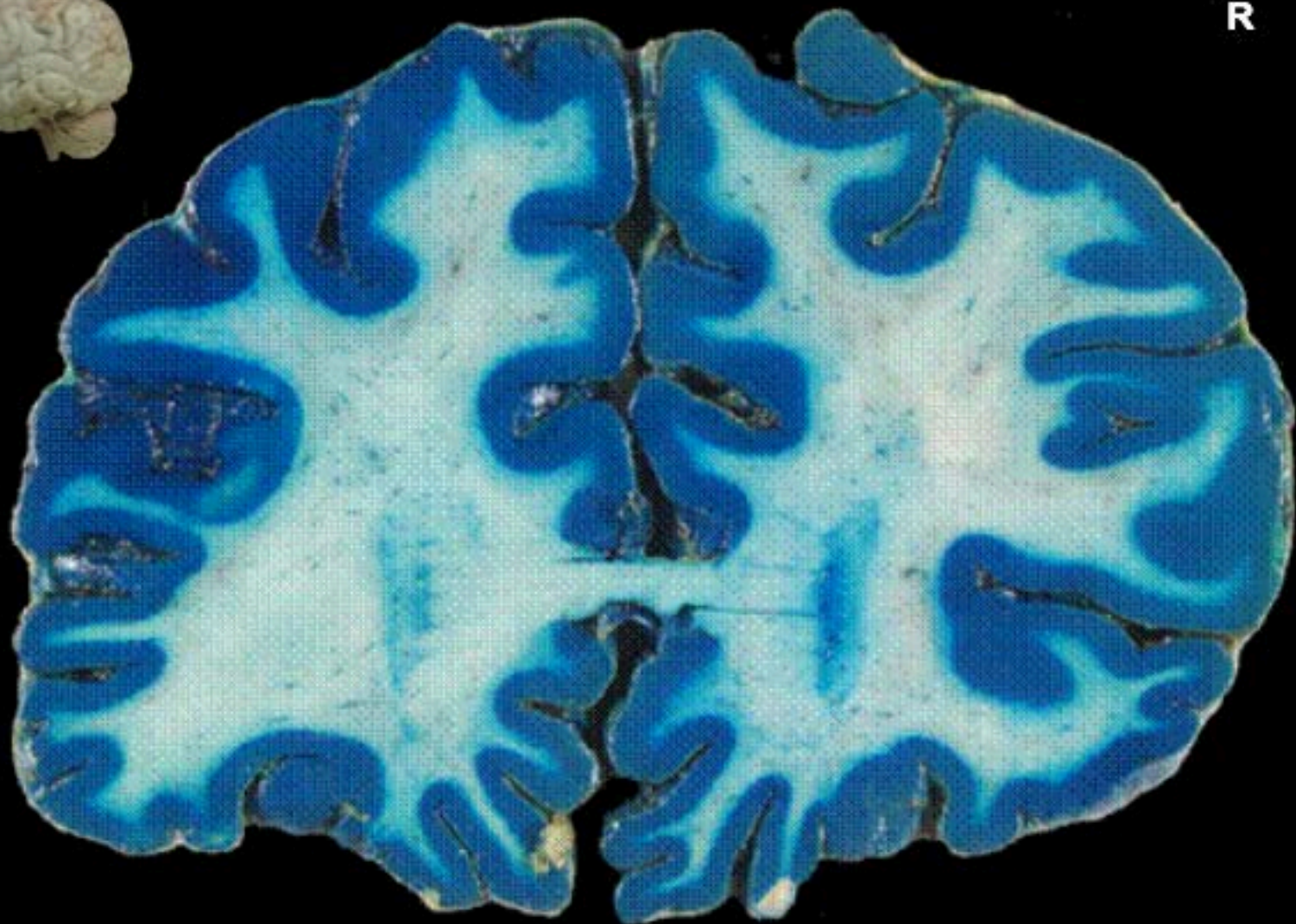
R

R

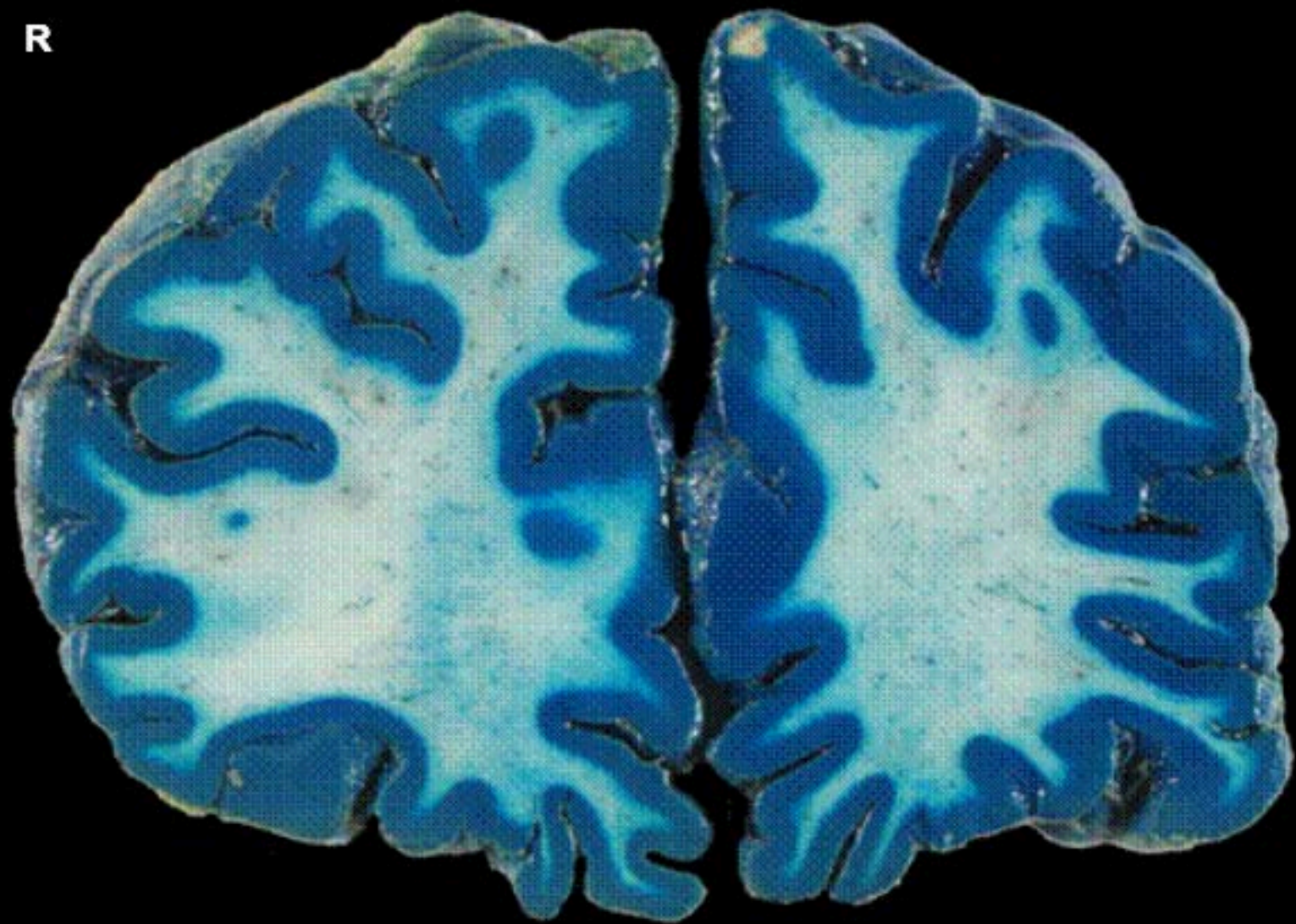




R



R



The End